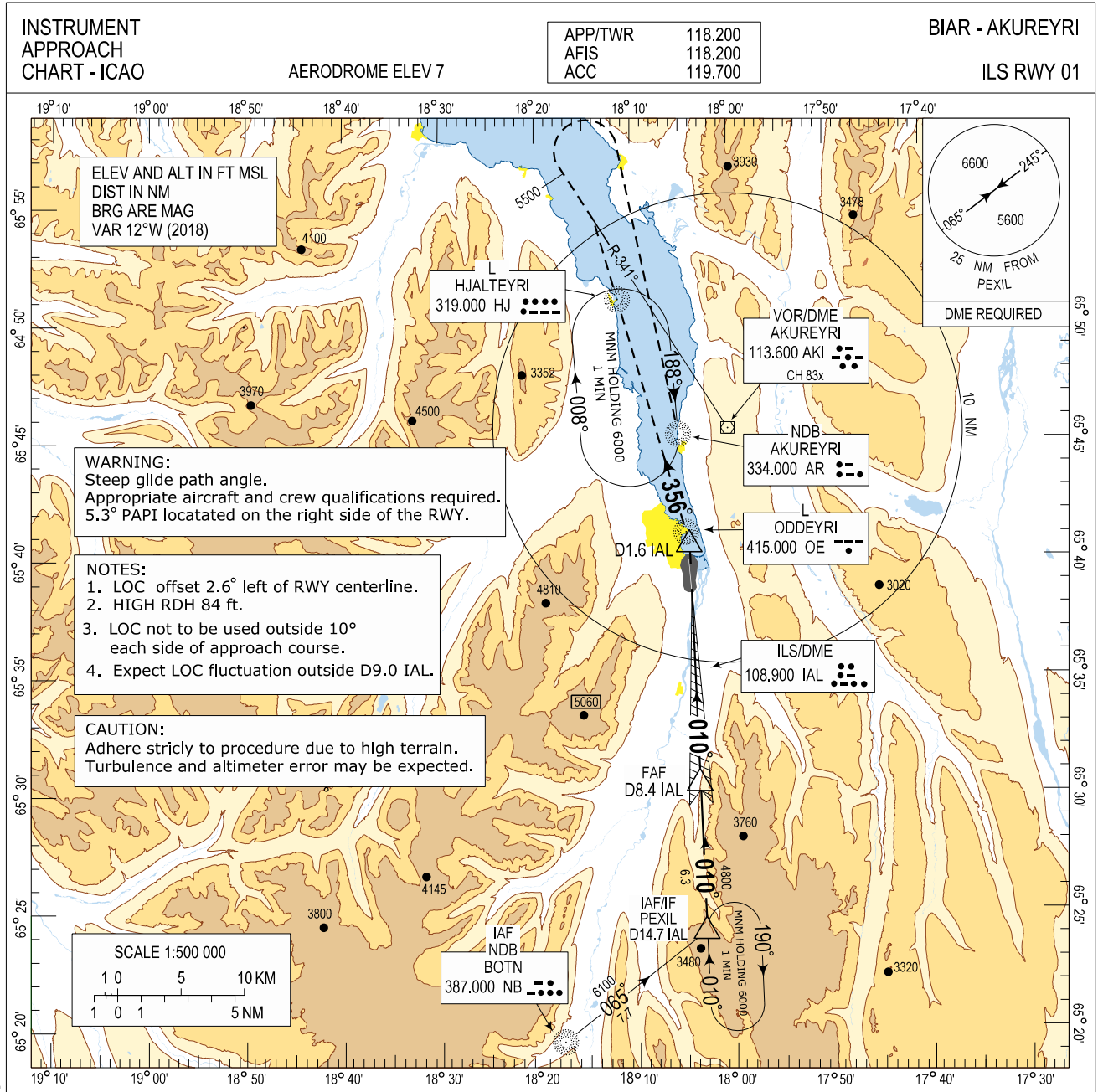
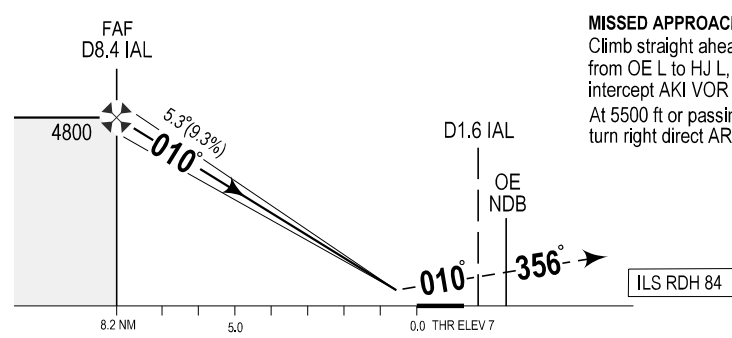


Akureyri ILS RWY 01 Instrument Approach Chart - ICAO



CHANGES: RADAR FREQ REMOVED. EDITORIAL

TRANSITION ALT 7000



**MISSED APPROACH:**  
Climb straight ahead, at D1.6 IAL turn left on track 356° from OE L to HJ L, continue on track 356° from HJ L and intercept AKI VOR Radial 341° outbound.  
At 5500 ft or passing HJ L, whichever is later, turn right direct AR NDB and hold at 6000 ft.

OCA (H)		A	B	C	Remarks
ILS CAT I	2.5%*	690 (683)	720 (713)	740 (733)	*MNM MISSED APCH CLIMB GRADIENT
	4.0%*	380 (373)	410 (403)	430 (423)	
	5.0%*	320 (313)	320 (313)	320 (313)	

DME IAL	2	3	4	5	6	7	8
ALTITUDE	1130	1700	2270	2840	3420	3990	4570
GS	kt	80	100	120	140	160	
Rate of descent (9.3%)	ft/MIN	752	940	1127	1315	1503	

THIS PAGE INTENTIONALLY LEFT BLANK