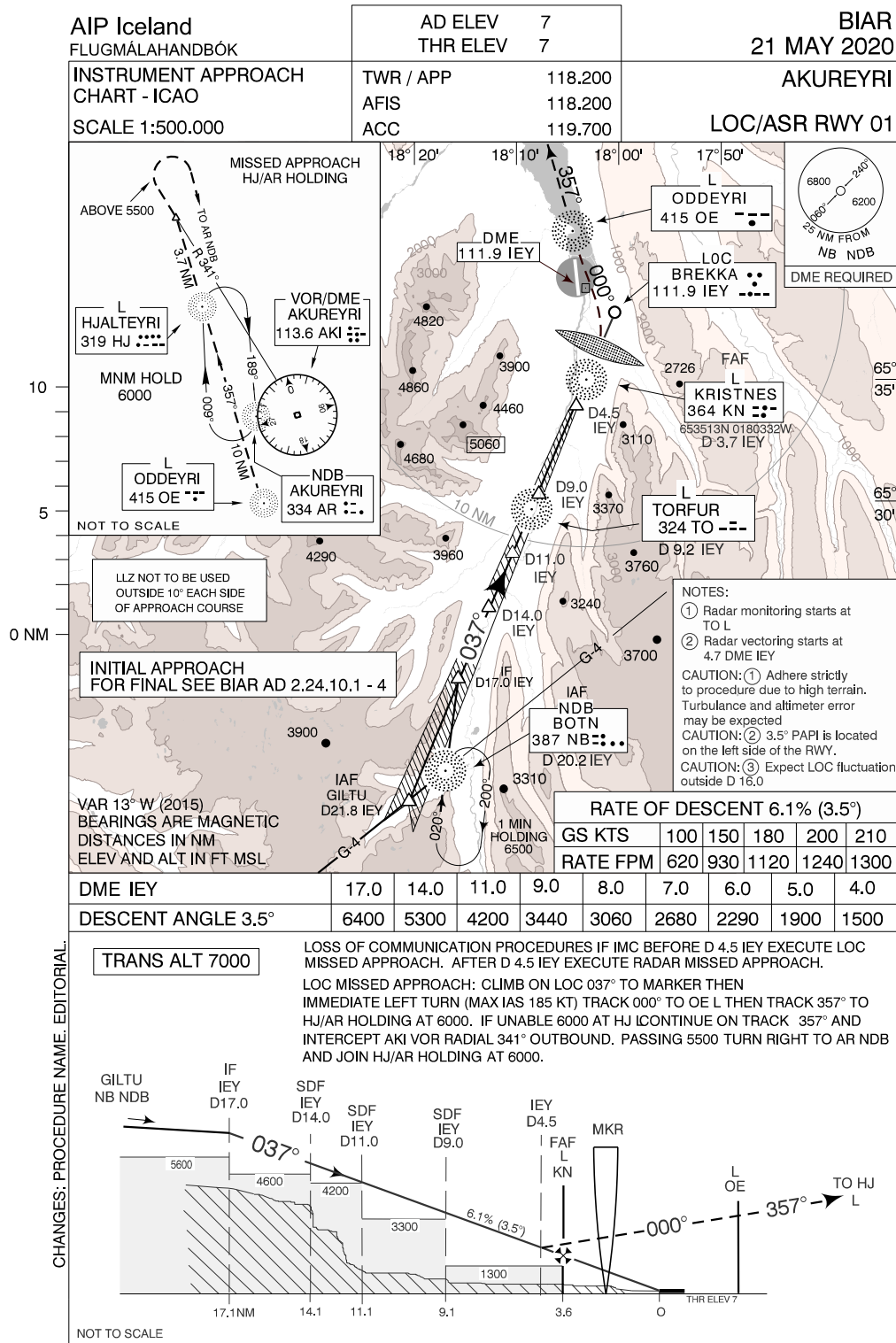


Akureyri LOC/ASR RWY 01 - INITIAL and FINAL



CHANGES: PROCEDURE NAME: EDITORIAL.

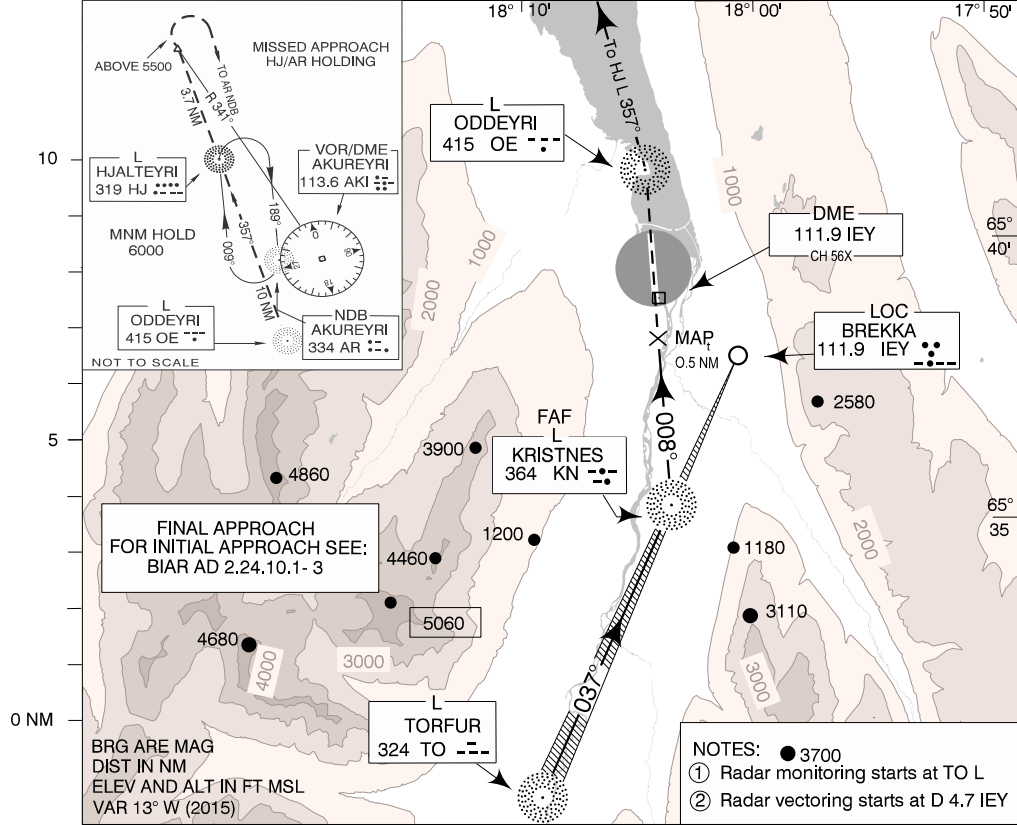
AIP Iceland

FLUGMÁLAHANDBÓK

AD ELEV	7
THR ELEV RWY 01	7
TWR / APP	118.200
AFIS	118.200
ACC	119.700

BIAR
21 MAY 2020

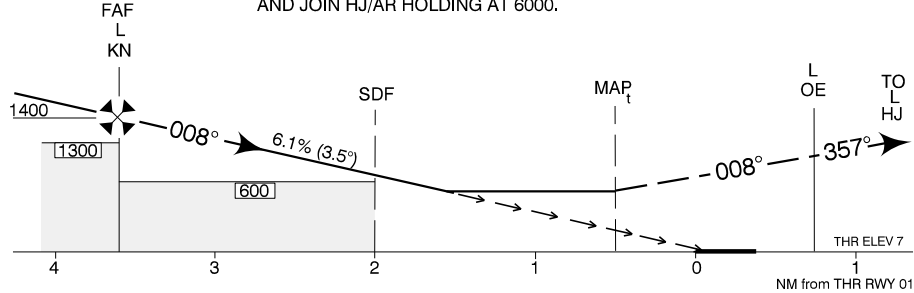
INSTRUMENT APPROACH CHART - ICAO	TWR / APP	118.200	AKUREYRI LOC/ASR RWY 01
SCALE 1: 250.000	AFIS	118.200	
	ACC	119.700	



CHANGES: PROCEDURE NAME, EDITORIAL

TRANS ALT 7000

RADAR MISSED APPROACH: CLIMB ON TRACK 008° TO OE L, LEFT TURN ON TRACK 357° TO HJ L AND JOIN HJ/AR HOLDING AT 6000. IF UNABLE TO REACH HJ AT 6000 CONTINUE ON TRACK 357° FROM HJ L AND INTERCEPT AKI VOR RADIAL 341° OUTBOUND, PASSING 5500 TURN RIGHT TO AR NDB AND JOIN HJ/AR HOLDING AT 6000.



OCA (H)		A	B	C	D	Remarks
STRAIGHT-IN	Climb Gradient 2.5%	580 (573)	610 (603)	630 (623)	650 (643)	
	Climb Gradient 4.0%	540 (533)	540 (533)	540 (533)	570 (563)	