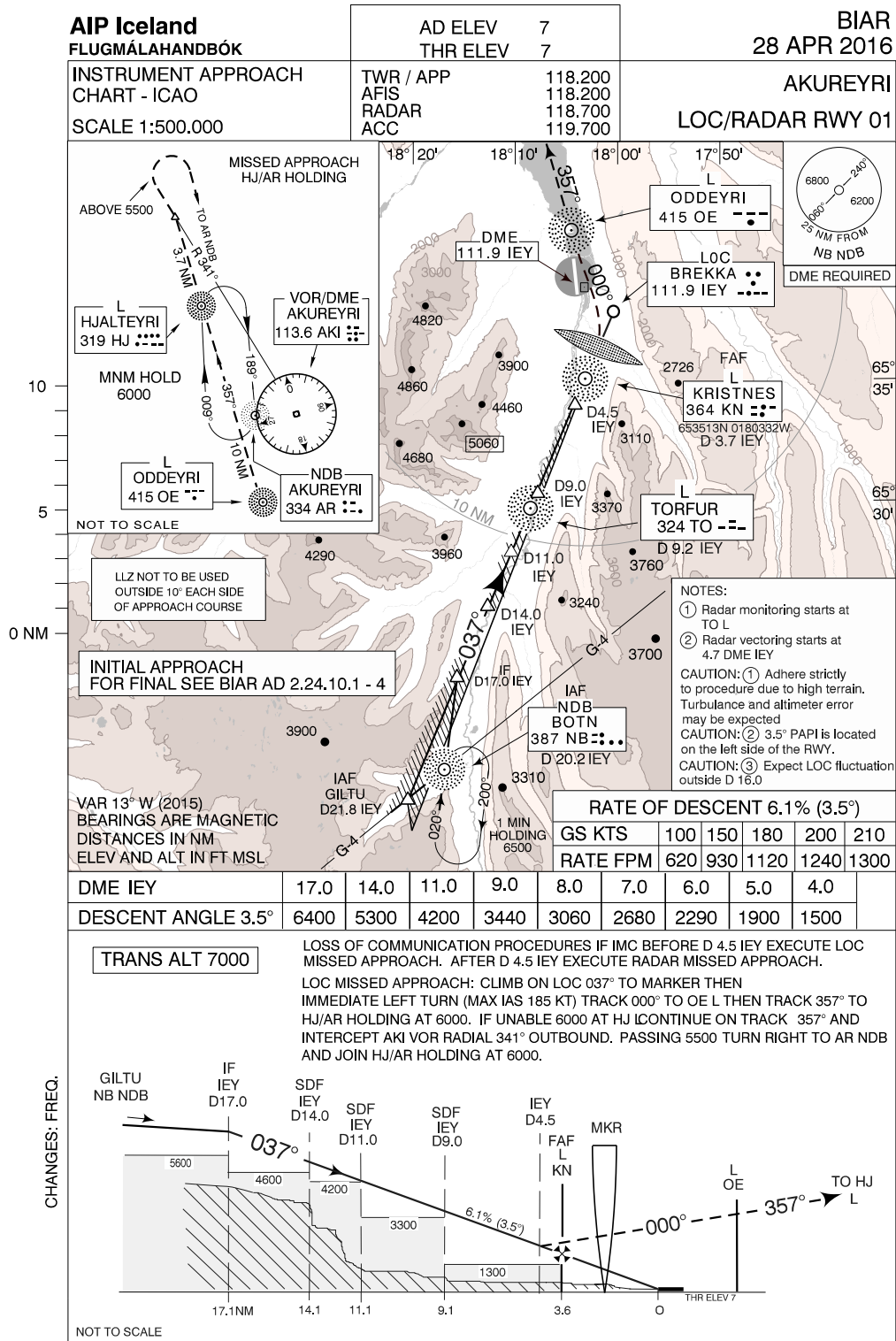


Akureyri LOC/RADAR RWY 01 - INITIAL and FINAL

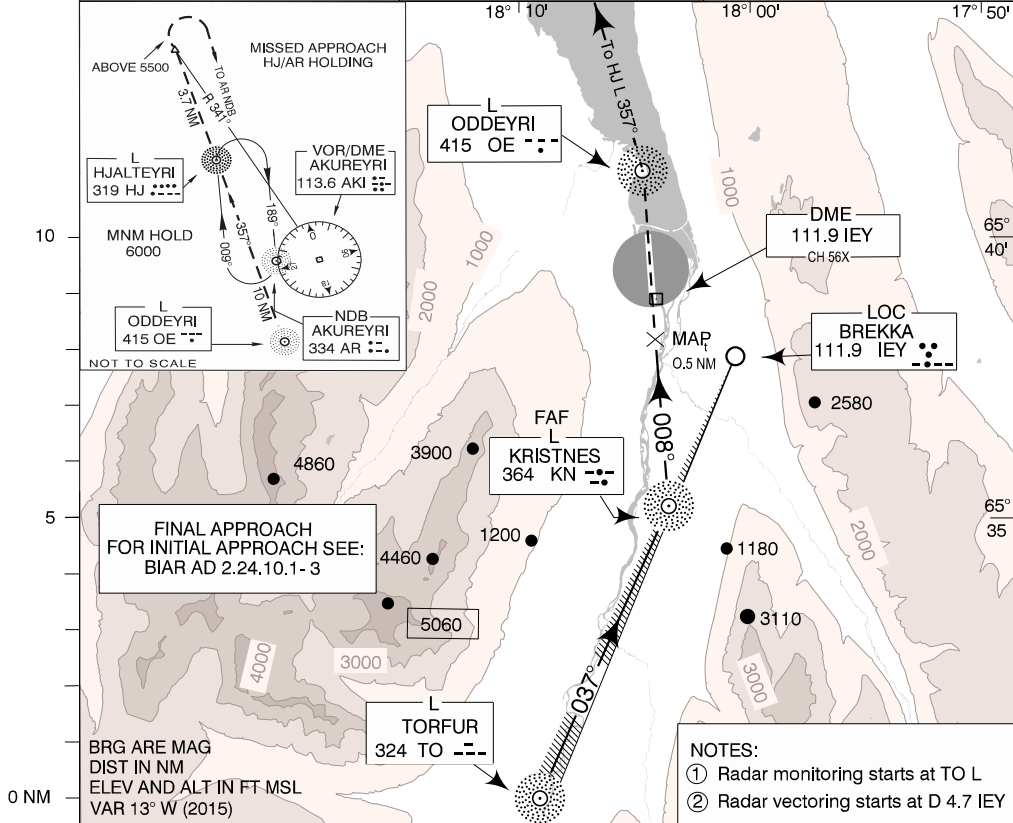


AIP Iceland
FLUGMÁLHAÐBÓK

AD ELEV	7
THR ELEV RWY 01	7
TWR / APP	118.200
AFIS	118.200
ACC	119.700
RADAR	118.700

BIAR
28 APR 2016

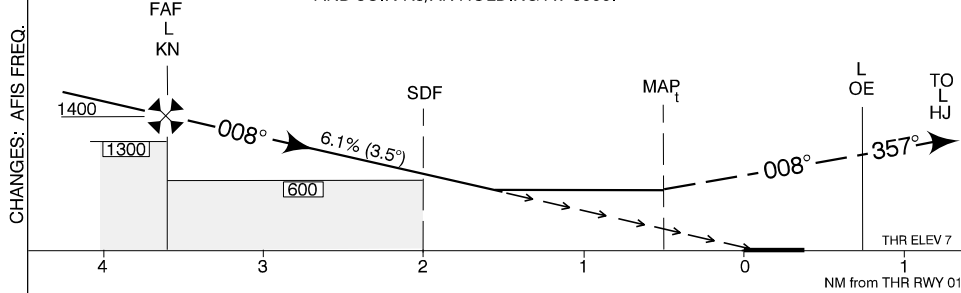
INSTRUMENT APPROACH CHART - ICAO	AKUREYRI	
SCALE 1: 250.000	LOC/RADAR RWY 01	



DISTANCE FROM THRESHOLD	4.0	3.5	3.0	2.5	2.0	1.5
RADAR ADVISORY ALT (ANGLE 3.5°)	1550	1365	1175	990	800	610

TRANS ALT 7000

RADAR MISSED APPROACH: CLIMB ON TRACK 008° TO OE L, LEFT TURN ON TRACK 357° TO HJ L AND JOIN HJ/AR HOLDING AT 6000. IF UNABLE TO REACH HJ AT 6000 CONTINUE ON TRACK 357° FROM HJ L AND INTERCEPT AKI VOR RADIAL 341° OUTBOUND, PASSING 5500 TURN RIGHT TO AR NDB AND JOIN HJ/AR HOLDING AT 6000.



OCA (H)		A	B	C	D	Remarks
RADAR	Climb Gradient 2.5%	580 (573)	610 (603)	630 (623)	650 (643)	
	Climb Gradient 4.0%	540 (533)	540 (533)	540 (533)	570 (563)	

Pub. by: /Útg.: ISAVIA