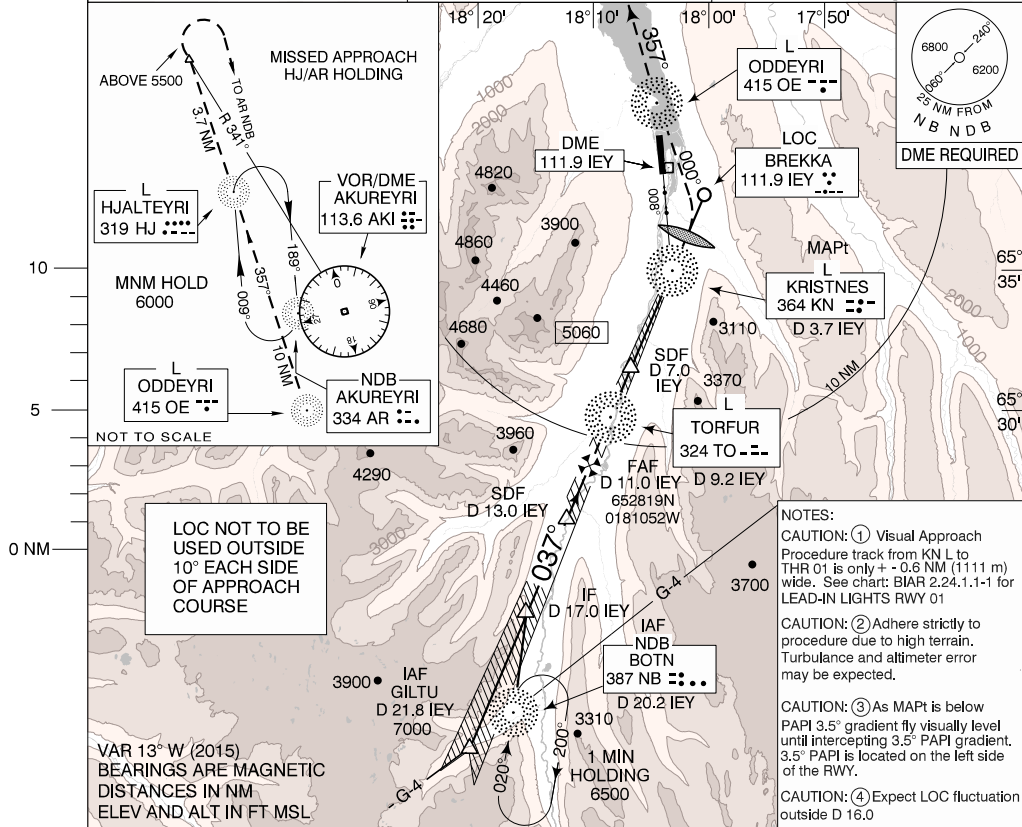


Akureyri LOC RWY 01 CAT A and B

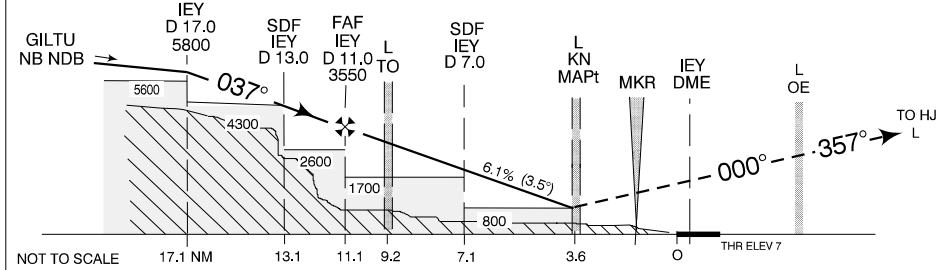
AIP Iceland FLUGMÁLAHANDBÓK INSTRUMENT APPROACH CHART - ICAO SCALE 1:500.000	AD ELEV 7	BIAR
	THR ELEV 7	27 MAR 2020
	TWR / APP 118.200	AKUREYRI
AFIS 118.200	LOC RWY 01	
ACC 119.700	CAT A AND B	



DME IEY	17	15	13	11	9	8	7	6	5
DESCENT ANGLE 3.5°	5800	5050	4300	3550	2800	2400	2050	1650	1250

TRANS LEVEL: BY ATC
TRANS ALT: 7000

MISSED APPROACH: CLIMB ON LOC 037° TO MARKER THEN IMMEDIATE LEFT TURN (MAX IAS 130 KT) TRACK 000° TO OE L. THEN TRACK 357° TO HJ L AND JOIN HJ/AR HOLDING AT 6000. IF UNABLE 6000 AT HJ L. CONTINUE ON TRACK 357° AND INTERCEPT AKI VOR RADIAL 341° OUTBOUND. PASSING 5500 TURN RIGHT TO AR NDB AND JOIN HJ/AR HOLDING AT 6000.



OCA (H)	A	B	GS KTS	100	150	180	200	210
LOC-DME	800 (793)	800 (793)	RATE FPM	620	930	1110	1240	1300
			REMARKS: FOLLOW VISUAL APPROACH PROCEDURE USING PRESCRIBED TRACK					

CHANGES: RADAR FREQ. REMOVED. EDITORIAL

THIS PAGE INTENTIONALLY LEFT BLANK