

Akureyri MILITARY TACAN RWY 01

18200

AKUREYRI, ICELAND

TACAN RWY 01

TACAN Chan	MOB 95	APCH CRS 025°	Rwy ldg THRE 7874 Arprt Elev 7
------------	--------	---------------	-----------------------------------

AL-1681 [USAF]

AKUREYRI (BIAR)

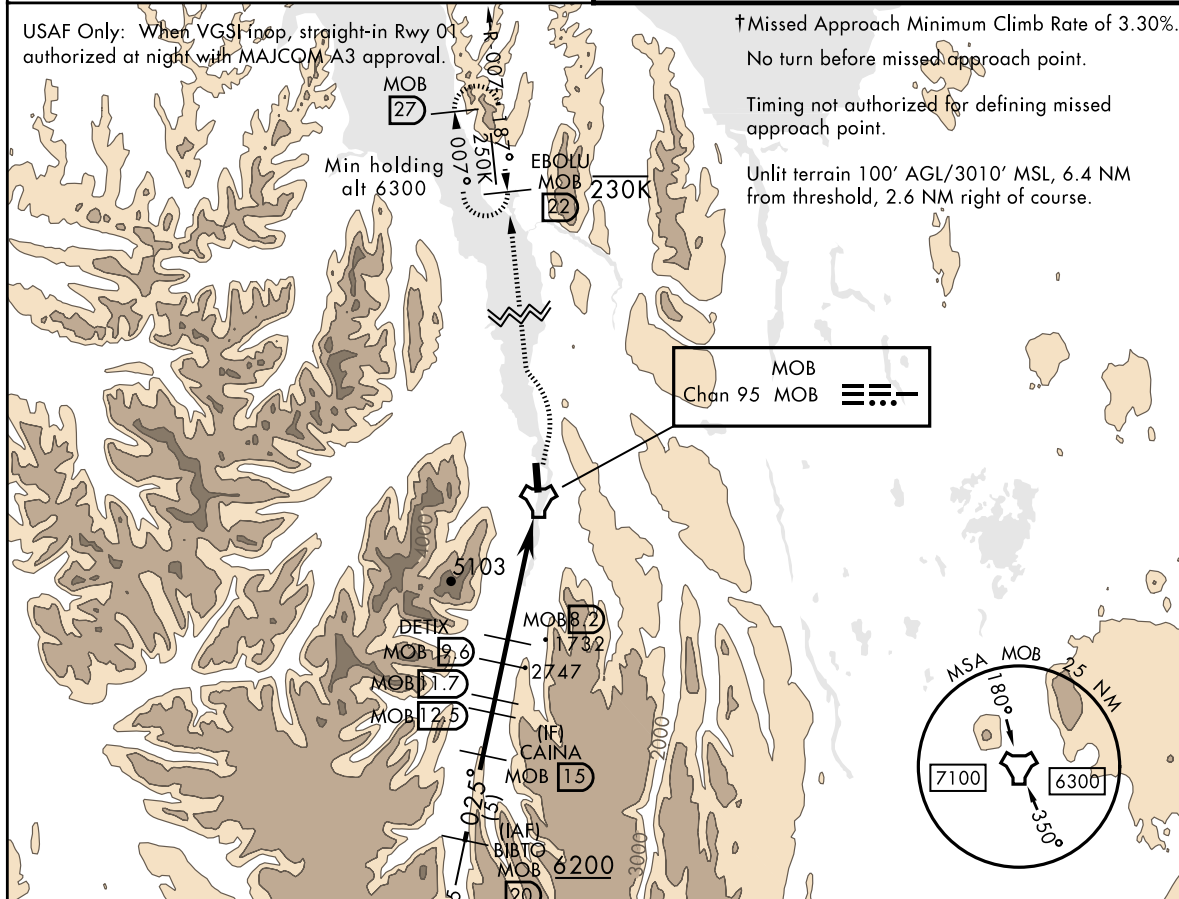
*When ALS inop, increase CAT CDE vis to 4800m.
When VGSI inop, procedure not authorized at night.



† MISSED APPROACH: Climbing to 6300, upon leaving 2300 turn left to intercept MOB TACAN R-007 outbound to EBOLU (MOB R-007/22 DME) and hold.

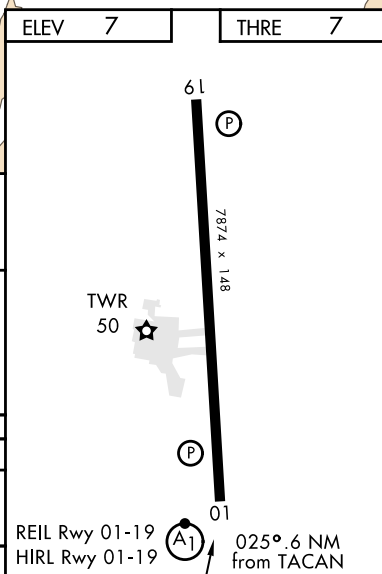
AKUREYRI RADAR
118.7

AKUREYRI TOWER
118.2



EMERG SAFE ALT 100 NM 8700
FOR USE BY MILITARY AIR POLICING AIRCRAFT ONLY

CATEGORY	A	B	C	D	E
S-01 *	2130-2000m 2123 (2200-2000m)	2130-2400m 2123 (2200-2400m)	2130-4000m	2123	(2200-4000m)
CIRCLING	NOT AUTHORIZED				



AKUREYRI, ICELAND
Orig 19JUL18
MIPS

65° 40' N - 18° 04' W

AKUREYRI (BIAR)

TACAN RWY 01

THIS PAGE INTENTIONALLY LEFT BLANK