

Akureyri MILITARY TACAN RWY 01

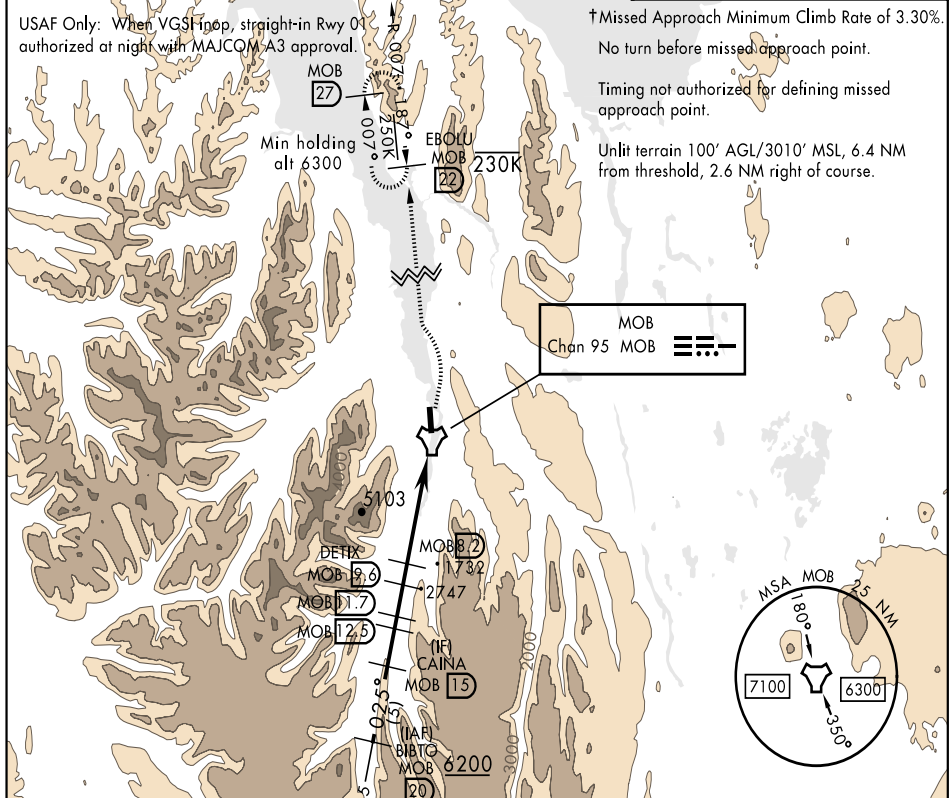
20114

AKUREYRI, ICELAND

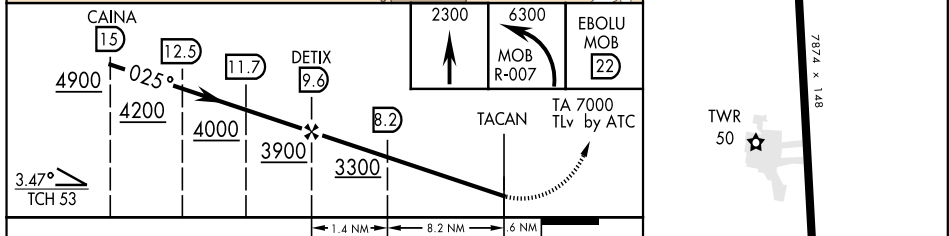
TACAN RWY 01

TACAN Chan	MOB 95	APCH CRS 025°	Rwy Idg 7874 THRE 7 Arprt Elev 7	AL-1681 [USAF]	AKUREYRI (BIAR)
*When ALS inop, increase CAT CDE vis to 4800m. When VGSi inop, procedure not authorized at night.			ALSF-1 	† MISSED APPROACH: Climbing to 6300, upon leaving 2300 turn left to intercept MOB TACAN R-007 outbound to EBOLU (MOB R-007/22 DME) and hold.	

REYKJAVIC ACC 119.7	AKUREYRI APP 118.2	AKUREYRI TOWER ★ 118.2
------------------------	-----------------------	---------------------------



EMERG SAFE ALT 100 NM 8700
FOR USE BY MILITARY AIR POLICING AIRCRAFT ONLY



CATEGORY	A	B	C	D	E
S-01 *	2130-2000m 2123 (2200-2000m)	2130-2400m 2123 (2200-2400m)	2130-4000m 2123 (2200-4000m)		
CIRCLING	NOT AUTHORIZED				

AKUREYRI, ICELAND 65° 40' N-18° 04' W AKUREYRI (BIAR)

Orig 23APR20
MIPS

TACAN RWY 01

THIS PAGE INTENTIONALLY LEFT BLANK