

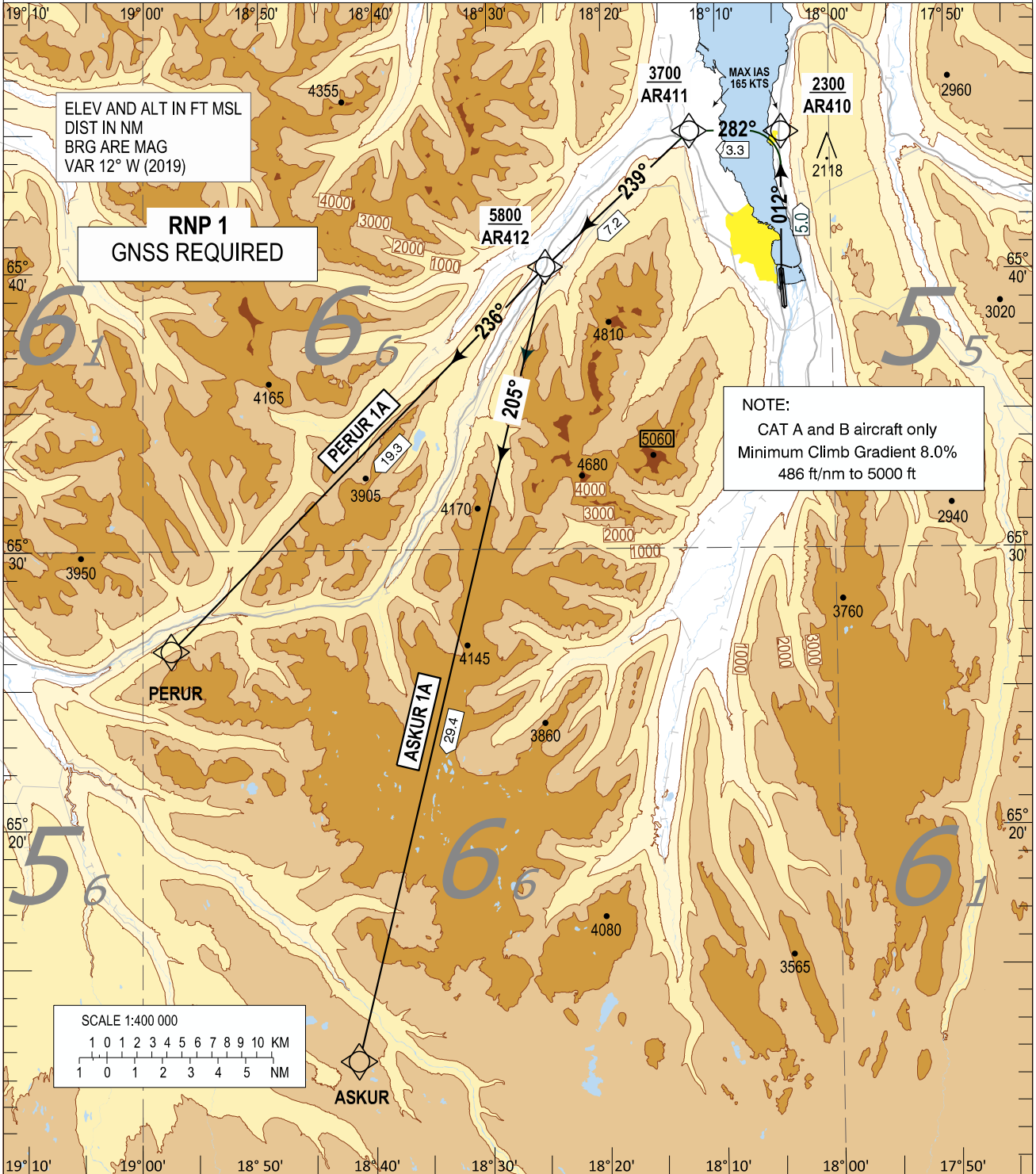
Akureyri RNP SID RWY 01 - PERUR 1A, ASKUR 1A

STANDARD
DEPARTURE CHART -
INSTRUMENT (SID) -
ICAO

TRANSITION
ALTITUDE 7000
AD ELEV 7

AKUREYRI TWR / APP	118.200
AKUREYRI AFIS	118.200
REYKJAVIK ACC	119.700

BIAR - AKUREYRI
RNP SID RWY 01
PERUR 1A
ASKUR 1A



CHANGES : CHART NAME.

GS KTS	75	100	125	150	175
8.0% Climb Gradient ft/min	610	810	1010	1215	1420

STANDARD DEPARTURE ROUTES- INSTRUMENT (SID) – ICAO			BIAR - AKUREYRI RNP SID RWY 01 PERUR 1A ASKUR 1A	
<p>REMARKS: High initial climb gradient. Aircraft CAT A and B only.</p> <p>GENERAL: RNP 1 required. Loss of RNP 1 capability – Advise ATC Maximum speed below FL100; 250 KT IAS unless otherwise stated under RESTRICTIONS or instructed by ATC.</p> <p>RADIO COMMUNICATION FAILURE: Set transponder to A 7600 Proceed in accordance with GEN 3.4.4.12.3 and for flights with oceanic clearance ENR 1.8.6.</p> <p>NOTE: Change to STANDARD QNH at Transition Altitude or passing last altitude restriction if lower.</p>				
DESIGNATOR	ROUTE	RESTRICTIONS	After Take-Off	
			CLIMB TO	Contact
PERUR 1A (PERUR ONE ALPHA DEPARTURE)	To AR410 on course 012°, left turn to AR411, left turn to AR412, to PERUR	A MNM climb gradient of 8.0% 486 FT/NM is required to 5000 FT . MAX IAS 165 KT until passing AR411 No turn before DER Cross AR410 at or above 2300 FT, Cross AR411 at or above 3700 FT, Cross AR412 at or above 5800 FT.	As cleared by ATC	Reykjavik Control 119.700 when instructed
ASKUR 1A (ASKUR ONE ALPHA DEPARTURE)	To AR410 on course 012°, left turn to AR411, left turn to AR412, left turn to ASKUR	A MNM climb gradient of 8.0% 486 FT/NM is required to 5000 FT . MAX IAS 165 KT until passing AR411. No turn before DER Cross AR410 at or above 2300 FT, Cross AR411 at or above 3700 FT, Cross AR412 at or above 5800 FT.	As cleared by ATC	Reykjavik Control 119.700 when instructed

For RECOMMENDED CODING TABLE see BIAR AD 2.25.1

For WAYPOINT COORDINATES see BIAR AD 2.25.3