

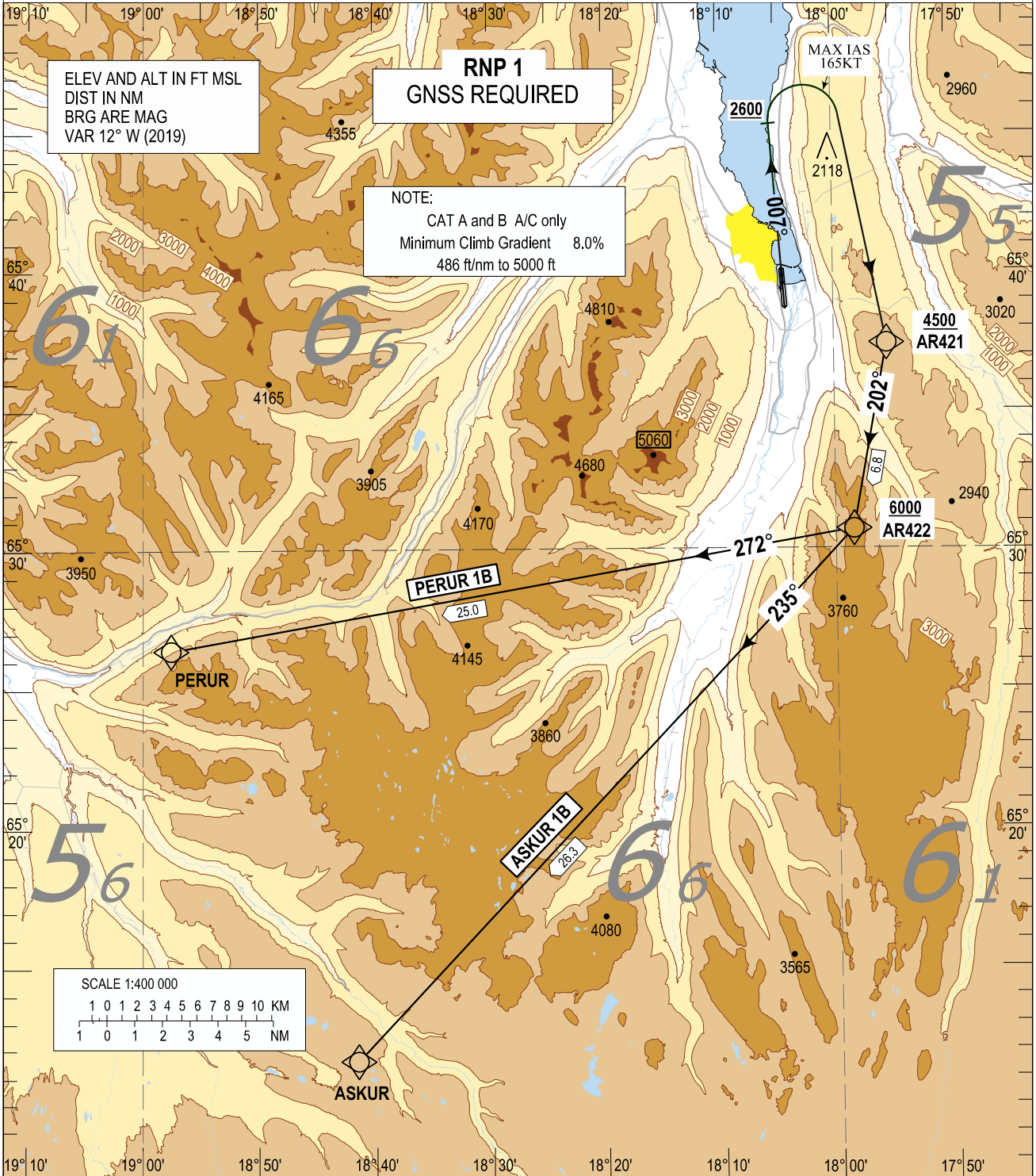
Akureyri RNP SID RWY 01 - PERUR 1B, ASKUR 1B

STANDARD
DEPARTURE CHART -
INSTRUMENT (SID) -
ICAO

TRANSITION
ALTITUDE 7000
AD ELEV 7

AKUREYRI TWR / APP	118.200
AKUREYRI AFIS	118.200
REYKJAVIK ACC	119.700

BIAR - AKUREYRI
RNP SID RWY 01
PERUR 1B
ASKUR 1B



CHANGES : CHART NAME.

GS KTS	75	100	125	150	175
8.0% Climb Gradient ft/min	610	810	1010	1215	1420

STANDARD DEPARTURE ROUTES- INSTRUMENT (SID) – ICAO			BIAR - AKUREYRI RNP SID RWY 01 PERUR 1B ASKUR 1B	
<p>REMARKS: High initial climb gradient. Aircraft CAT A and B only.</p> <p>GENERAL: RNP 1 required. Loss of RNP 1 capability – Advise ATC Maximum speed below FL100; 250 KT IAS unless otherwise stated under RESTRICTIONS or instructed by ATC.</p> <p>RADIO COMMUNICATION FAILURE: Set transponder to A 7600 Proceed in accordance with GEN 3.4.4.12.3 and for flights with oceanic clearance ENR 1.8.6.</p> <p>NOTE: Change to STANDARD QNH at Transition Altitude or passing last altitude restriction if lower.</p>				
DESIGNATOR	ROUTE	RESTRICTIONS	After Take-Off	
			CLIMB TO	Contact
PERUR 1B (PERUR ONE BRAVO DEPARTURE)	Climb on course 007°, passing 2600 FT turn right to AR421, to AR422, right turn to PERUR	A MNM climb gradient of 8.0% 486 FT/NM is required to 5000 FT . MAX IAS 165 KT until AR421. Cross AR421 at or above 4500 FT, Cross AR422 at or above 6000 FT.	As cleared by ATC	Reykjavik Control 119.700 when instructed
ASKUR 1B (ASKUR ONE BRAVO DEPARTURE)	Climb on course 007°, passing 2600 FT turn right to AR421, to AR422, right turn to ASKUR	A MNM climb gradient of 8.0% 486 FT/NM is required to 5000 FT . MAX IAS 165 KT until AR421. Cross AR421 at or above 4500 FT, Cross AR422 at or above 6000 FT,	As cleared by ATC	Reykjavik Control 119.700 when instructed

For RECOMMENDED CODING TABLE see BIAR AD 2.25.1

For WAYPOINT COORDINATES see BIAR AD 2.25.3