

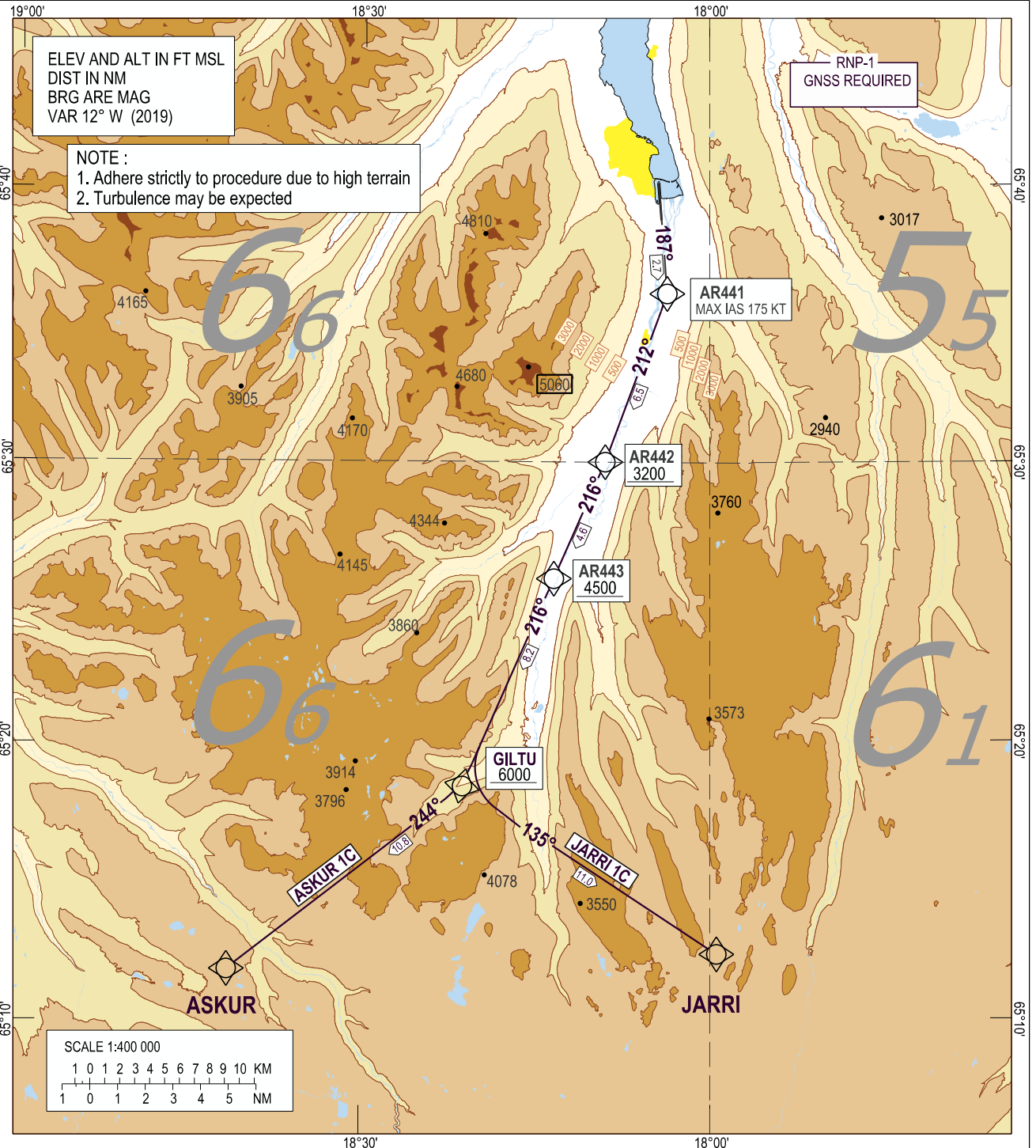
Akureyri RNP SID RWY 19 - ASKUR 1C, JARRI 1C

STANDARD DEPARTURE CHART -  
INSTRUMENT (SID) - ICAO

TRANSITION  
ALTITUDE 7000  
AERODROME ELEV 7

AKUREYRI TWR / APP	118.200
AKUREYRI AFIS	118.200
REYKJAVIK ACC	119.700

BIAR - AKUREYRI  
RNP SID RWY 19  
ASKUR 1C, JARRI 1C



GS KT	75	100	125	150	175	200	225	250	275
5.8% Climb Gradient	440	590	730	880	1030	1170	1320	1470	1620
3.3% Climb Gradient	250	335	420	500	585	670	750	835	920

CHANGES : CHART NAME.

STANDARD DEPARTURE ROUTES- INSTRUMENT (SID) – ICAO			BIAR - AKUREYRI RNP SID RWY 19 ASKUR 1C, JARRI 1C	
<p><b>REMARKS:</b> Aircraft CAT A, B and C only</p> <p><b>GENERAL:</b> RNP 1 required. Loss of RNP 1 capability – Advise ATC Maximum speed below FL100; 250 KT IAS unless otherwise stated under RESTRICTIONS or instructed by ATC.</p> <p><b>RADIO COMMUNICATION FAILURE:</b> Set transponder to A 7600 Proceed in accordance with GEN 3.4.4.12.3 and for flights with oceanic clearance ENR 1.8.6</p> <p><b>NOTE:</b> Change to STANDARD QNH at Transition Altitude or passing last altitude restriction if lower.</p>				
DESIGNATOR	ROUTE	RESTRICTIONS	After Take-Off	
			CLIMB TO	Contact
<p><b>ASKUR 1C</b> (ASKUR ONE CHARLIE DEPARTURE)</p>	<p>To AR441 on course 187°, right turn to AR442, to AR443, to GILTU, right turn to ASKUR.</p>	<p>A MNM climb gradient of <b>5.8%</b> i.e. 352 FT/NM is required up to <b>4100</b> FT, thereafter MNM climb gradient of 3.3% i.e 201 FT/NM MAX IAS 175 KT until AR441 Cross AR442 at 3200 FT or above. Cross AR443 at 4500 FT or above. Cross GILTU at 6000 FT or above,</p>	<p>As cleared by ATC</p>	<p>Reykjavik Control 119.700 when instructed.</p>
<p><b>JARRI 1C</b> (JARRI ONE CHARLIE DEPARTURE)</p>	<p>To AR441 on course 187°, right turn to AR442, to AR443, to GILTU, left turn to JARRI.</p>	<p>A MNM climb gradient of <b>5.8%</b> i.e. 352 FT/NM is required up to <b>4100</b> FT, thereafter MNM climb gradient of 3.3% i.e 201 FT/NM MAX IAS 175 KT until AR441 Cross AR442 at 3200 FT or above. Cross AR443 at 4500 FT or above. Cross GILTU at 6000 FT or above</p>	<p>As cleared by ATC</p>	<p>Reykjavik Control 119.700 when instructed</p>

For RECOMMENDED CODING TABLE see BIAR AD 2.25.2

For WAYPOINT COORDINATES see BIAR AD 2.25.3