

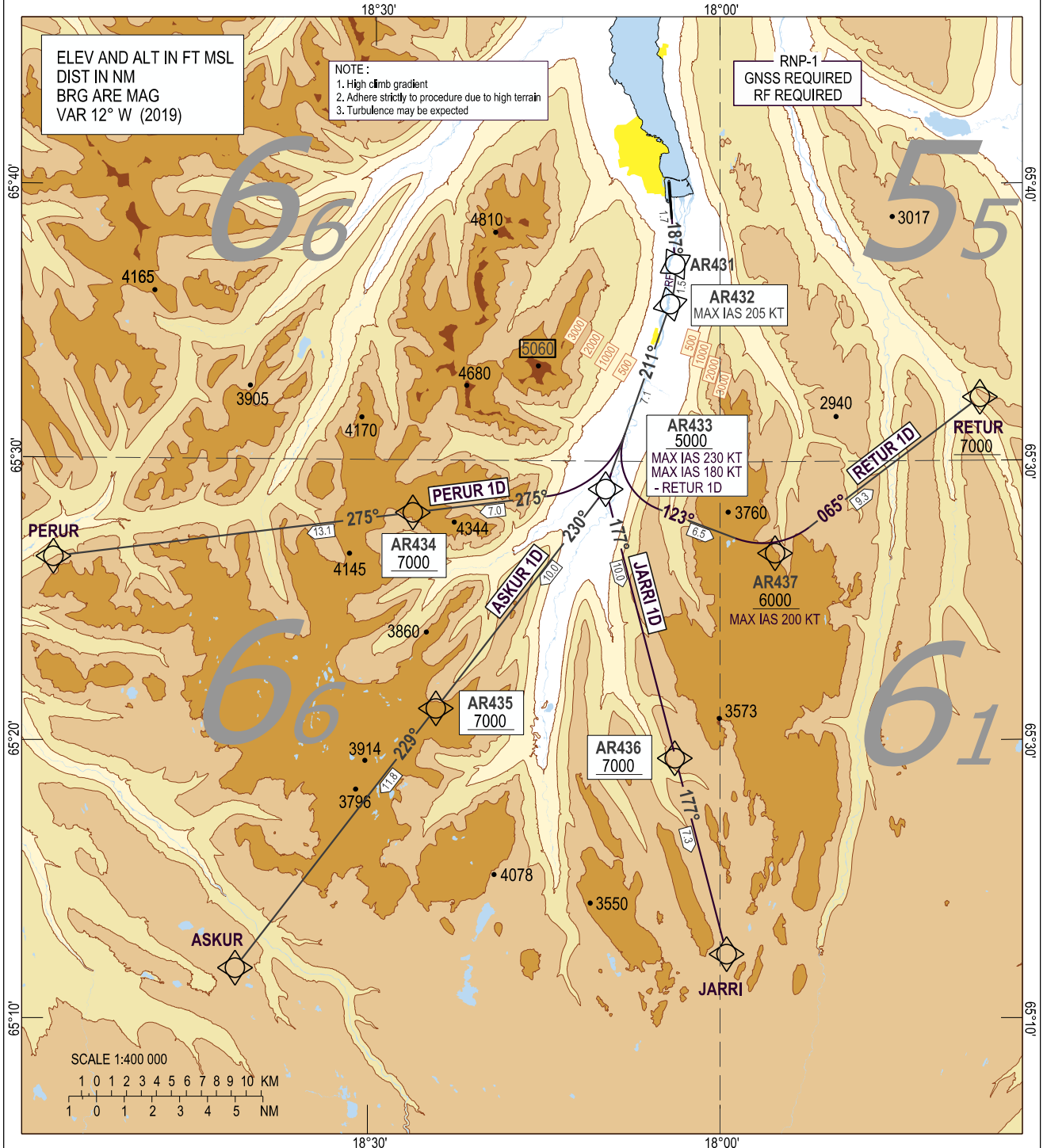
Akureyri RNP SID RWY 19 - PERUR 1D, ASKUR 1D, JARRI 1D, RETUR 1D

STANDARD DEPARTURE CHART -
INSTRUMENT (SID) - ICAO

TRANSITION
ALTITUDE 7000
AERODROME ELEV 7

AKUREYRI TWR / APP	118.200
AKUREYRI AFIS	118.200
REYKJAVIK ACC	119.700

BIAR - AKUREYRI
RNP SID RWY 19
PERUR 1D,ASKUR 1D,
JARRI 1D,RETUR 1D



CHANGES : CHART NAME.

GS KT	75	100	125	150	175	200	225	250	275
8.3% Climb Gradient	630	840	1050	1260	1470	1680	1890	2101	2310
8.1% Climb Gradient	620	820	1030	1230	1440	1640	1850	2050	2260
3.3% Climb Gradient	250	335	420	500	585	670	750	835	920

STANDARD DEPARTURE ROUTES- INSTRUMENT (SID) – ICAO	BIAR - AKUREYRI RNP SID RWY 19 PERUR 1D, ASKUR 1D, JARRI 1D, RETUR 1D
---	---

REMARKS:	High initial climb gradient. RETUR 1D aircraft CAT A, B and C only.
GENERAL:	RNP 1 required. Loss of RNP 1 capability – Advise ATC Maximum speed below FL100; 250 KT IAS unless otherwise stated under RESTRICTIONS or instructed by ATC.
RADIO COMMUNICATION FAILURE:	Set transponder to A 7600 Proceed in accordance with GEN 3.4.4.12.3 and for flights with oceanic clearance ENR 1.8.6.
NOTE:	Change to STANDARD QNH at Transition Altitude or passing last altitude restriction if lower.

DESIGNATOR	ROUTE	RESTRICTIONS	After Take-Off	
			CLIMB TO	Contact
PERUR 1D (PERUR ONE DELTA DEPARTURE)	To AR431 on course 187°, right RF turn to AR432, to AR433, right turn to AR434, to PERUR.	A MNM climb gradient of 8.3% i.e. 504 FT/NM is required up to 6000 FT , thereafter MNM climb gradient of 3.3% i.e 201 FT/NM MAX IAS 205 KT until AR432 MAX IAS 230 KT until AR433 Cross AR433 at 5000 FT or above. Cross AR434 at 7000 FT or above	As cleared by ATC	Reykjavik Control 119.700 when instructed
ASKUR 1D (ASKUR ONE DELTA DEPARTURE)	To AR431 on course 187°, right RF turn to AR432, to AR433, right turn to AR435, to ASKUR.	A MNM climb gradient of 8.1% i.e. 492 FT/NM is required up to 5000 FT , thereafter MNM climb gradient of 3.3% i.e 201 FT/NM MAX IAS 205 KT until AR432 MAX IAS 230 KT until AR433 Cross AR433 at 5000 FT or above. Cross AR435 at 7000 FT or above	As cleared by ATC	Reykjavik Control 119.700 when instructed
JARRI 1D (JARRI ONE DELTA DEPARTURE)	To AR431 on course 187°, right RF turn to AR432, to AR433, left turn to AR436, to JARRI.	A MNM climb gradient of 8.1% i.e. 492 FT/NM is required up to 5000 FT , thereafter MNM climb gradient of 3.3% i.e 201 FT/NM MAX IAS 205 KT until AR432 MAX IAS 230 KT until AR433 Cross AR433 at 5000 FT or above. Cross AR436 at 7000 FT or above.	As cleared by ATC	Reykjavik Control 119.700 when instructed
RETUR 1D (RETUR ONE DELTA DEPARTURE)	To AR431 on course 187°, right RF turn to AR432, to AR433, left turn to AR437 to RETUR.	Cat A, B and C aircraft only A MNM climb gradient 8.3% i.e. 504 FT/NM is required up to 5000 FT , thereafter MNM climb gradient of 3.3% i.e 201 FT/NM MAX IAS 180 KT until AR433 MAX IAS 200 KT until AR437 Cross AR433 at 5000 FT or above. Cross AR437 at 6000 FT or above, Cross RETUR at 7000 FT or above.	As cleared by ATC	Reykjavik Control 119.700 when instructed

For **RECOMMENDED CODING TABLE** see BIAR AD 2.25.2

For **WAYPOINT COORDINATES** see BIAR AD 2.25.3