

Akureyri SID RWY 01 - AR - 1A

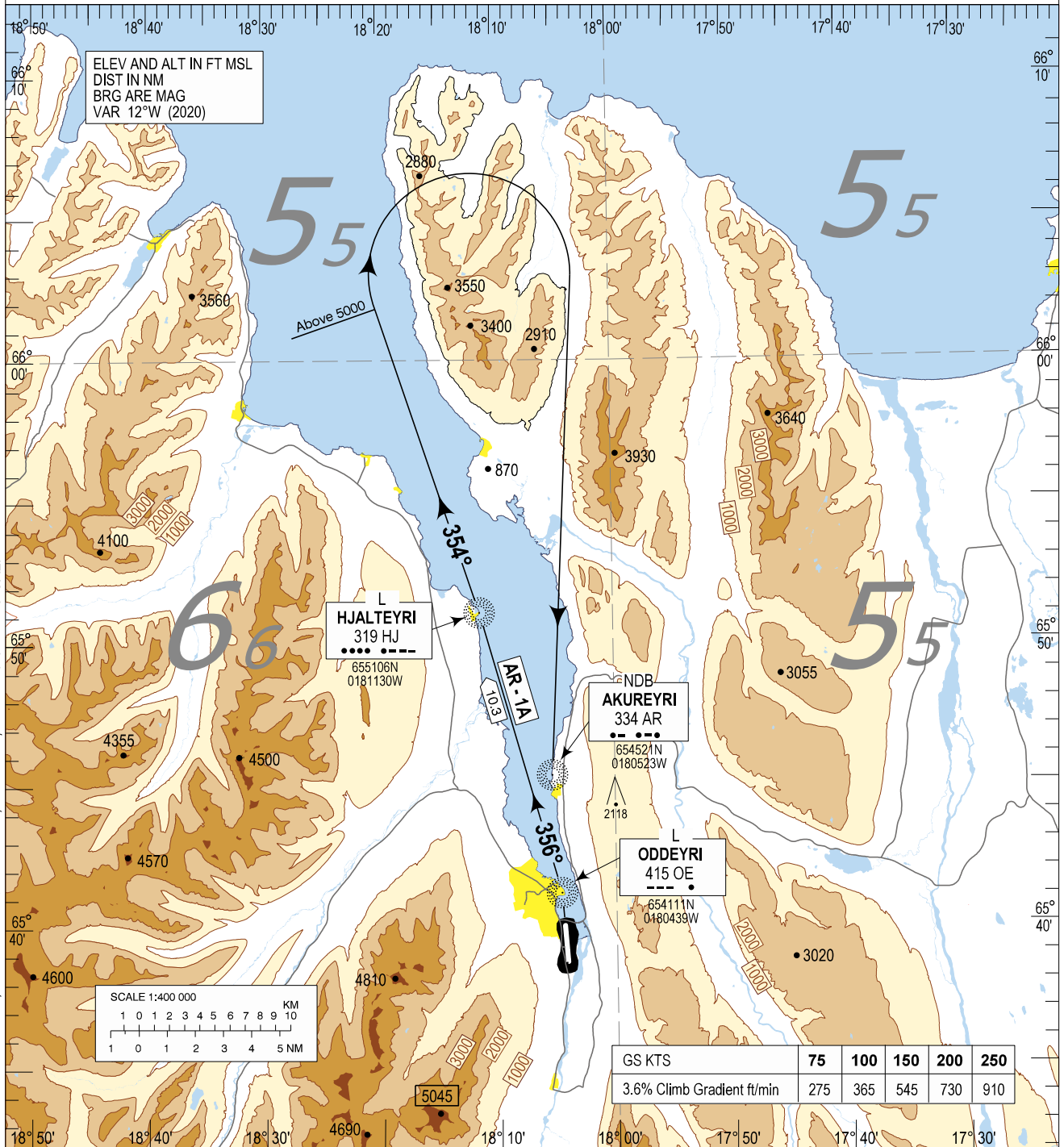
STANDARD DEPARTURE CHART -
INSTRUMENT (SID) - ICAO

TRANSITION
ALTITUDE 7000
AD ELEV 7

AKUREYRI TWR / APP	118.200
AKUREYRI AFIS	118.200
REYKJAVIK ACC	119.700

BIAR - AKUREYRI

SID RWY 01
AR - 1A



DESIGNATOR	ROUTING	RESTRICTIONS	After Take-off	
			Climb to	Contact
AR - 1A (AKUREYRI ONE ALPHA DEPARTURE)	Climb direct to OE Locator. Then left turn on track 356° to HJ Locator. Then left turn on track 354° from HJ Locator until passing 5000'. Turn right direct to AR NDB.	Minimum Climb Gradient 3.6% i.e. (219 ft/nm) is required to 5000 FT	As cleared by ATC	Reykjavik Control 119.700 when Instructed

THIS PAGE INTENTIONALLY LEFT BLANK