

Akureyri SID RWY 19 - BOTN 1A

AIP Iceland  
FLUGMÁLAHANDBÓK

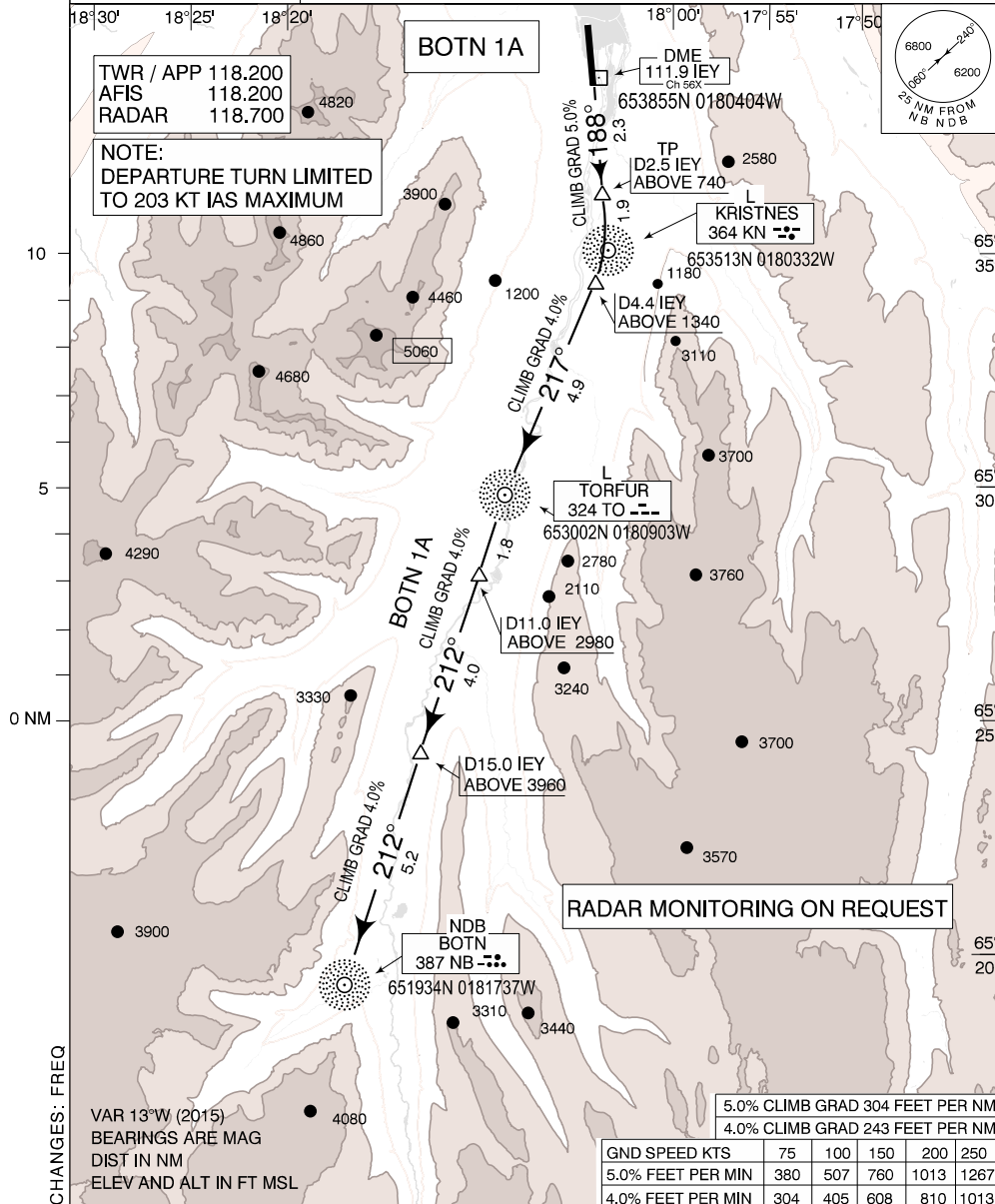
AKUREYRI SID  
RWY 19

TRANS LEVEL BY ATC  
TRANS ALT 7000 FT

BIAR  
28 APR 2016

STANDARD DEPARTURE CHART -  
INSTRUMENT (SID) - ICAO  
SCALE 1:300,000  
AD ELEV 7

STRICT ADHERENCE WITHIN THE LIMITS PERFORMANCE CRITERIA IS MANDATORY.  
MINIMUM CLIMB GRAD: INITIAL 5.0% UNTIL 4.4 DME IEY. THEN 4.0% UNTIL  
REACHING 5230. IF UNABLE TO COMPLY WITH SID ADVICE ATC PRIOR TO  
TAKE-OFF



SID	RWY	ROUTING	MINIMUM CROSSING ALTITUDES
BOTN 1A	19	CLIMB ON TRACK 188°. AT 2.5 DME IEY IMMEDIATE RIGHT TURN (MAX 203 KT IAS) ON TRACK 217° TO TORFUR LOCATOR. AT TORFUR LOCATOR TURN LEFT ON TRACK 212° TO NB NDB. CONTINUE AS CLEARED CLIMBING TO MEA BEFORE ACCELERATION.	CROSS 2.5 DME IEY ABOVE 740 CROSS 4.4 DME IEY ABOVE 1340 CROSS TORFUR LOCATOR ABOVE 2560 CROSS 11.0 DME IEY ABOVE 2980 CROSS 15.0 DME IEY ABOVE 3960 CROSS NB NDB ABOVE 5230

Útg./Pub. by: ISAVIA

THIS PAGE INTENTIONALLY LEFT BLANK