

Akureyri (SID) - ICAO - RWY01-RNAV(RNP) - PERUR 1S, ASKUR 1S

STANDARD DEPARTURE CHART -  
INSTRUMENT (SID) - ICAO  
SCALE 1:400,000

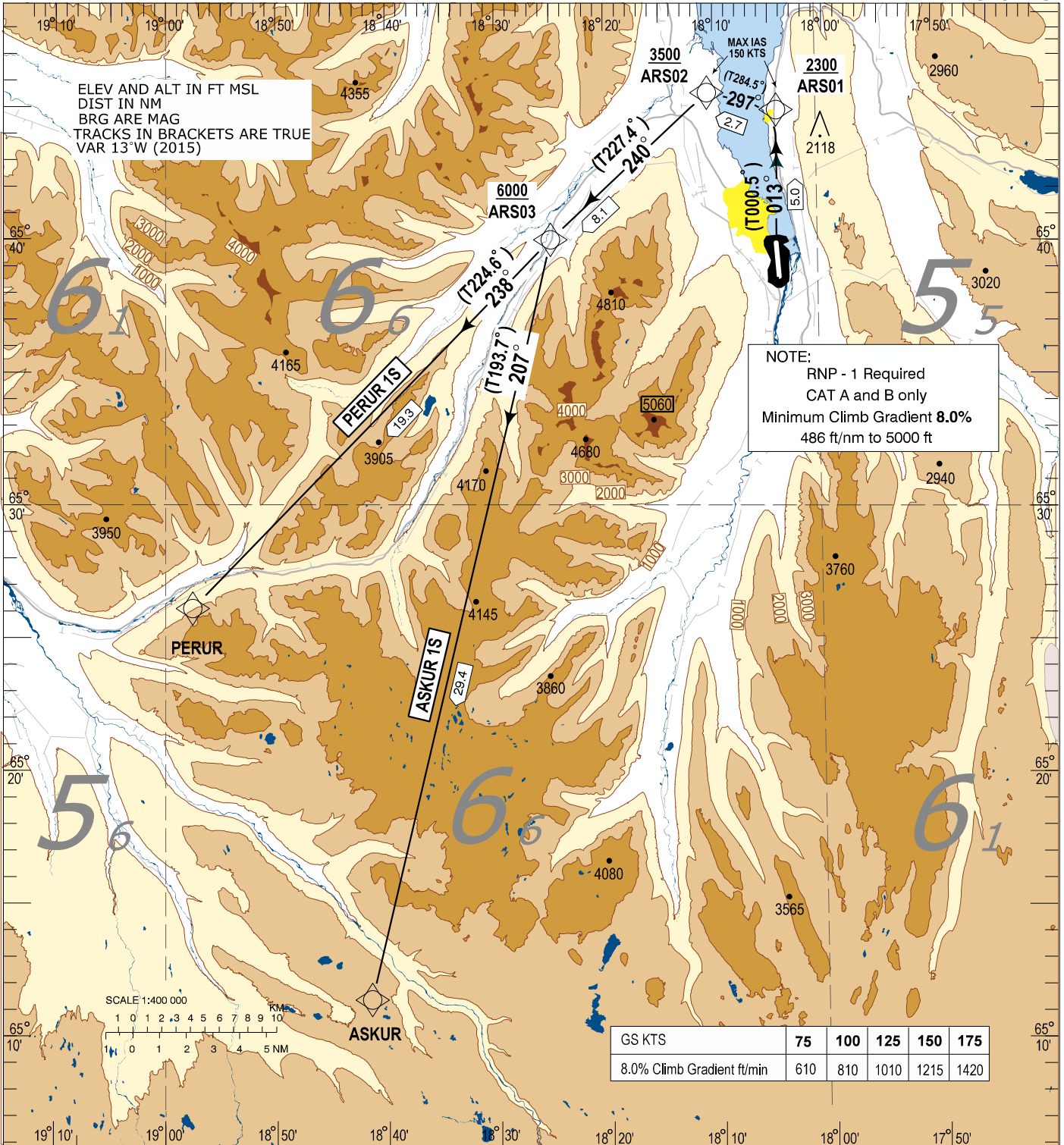
TRANSITION  
ALTITUDE 7000

AKUREYRI TWR / APP	118.200
AKUREYRI AFIS	118.200
AKUREYRI RADAR	118.700
REYKJAVIK ACC	119.700

BIAR - AKUREYRI

RNAV(RNP) SID RWY 01  
PERUR 1S  
ASKUR 1S

AD ELEV 7



**PERUR 1S:**

Climb on course 013° to ARS01, turn left (MAX IAS 150 kts) on course 297° to ARS02 turn left (MAX IAS 150 kts) on course 240° to ARS03 turn left on course 238° to PERUR.  
Minimum Climb Gradient 8.0% 486 ft/nm up to 5000 ft.

**ASKUR 1S:**

Climb on course 013° to ARS01 turn left (MAX IAS 150 kts) on course 297° to ARS02, turn left (MAX IAS 150 kts) on course 240° to ARS03, turn left on course 207° to ASKUR.  
Minimum Climb Gradient 8.0% 486 ft/nm up to 5000 ft.

PERUR I S RNAV(RNP) SID RWY 01

Serial Number	Path Descriptor	Waypoint Identifier	Fly-over	Course / Track °M(°T)	Magnetic Variation	Distance	Turn Direction	Altitude (ft)	Speed (kt/h)	VPA/TCH	Navigation Specification
001	CF	ARS01	-	013 (000.5)	+13.0	5.0	L	+2300	-150		RNP 1
002	TF	ARS02	-	297 (284.5)	+13.0	2.7	L	+3500	-150		RNP 1
003	TF	ARS03	-	240 (227.4)	+13.1	8.1	L	+6000			RNP 1
004	TF	PERUR	-	238 (224.6)	+13.3	19.3					RNP 1

ASKUR I S RNAV(RNP) SID RWY 01

Serial Number	Path Descriptor	Waypoint Identifier	Fly-over	Course / Track °M(°T)	Magnetic Variation	Distance	Turn Direction	Altitude (ft)	Speed (kt/h)	VPA/TCH	Navigation Specification
001	CF	ARS01	-	013 (000.5)	+13.0	5.0	L	+2300	-150		RNP 1
002	TF	ARS02	-	297 (284.5)	+13.0	2.7	L	+3500	-150		RNP 1
003	TF	ARS03	-	240 (227.4)	+13.1	8.1	L	+6000			RNP 1
004	TF	ASKUR	-	207 (193.7)	+13.1	29.4					RNP 1

Waypoint coordinates

Waypoint Identifier	Coordinates		Display	
ARS01	654502.67N	0180419.54W	N 6545.04	W 01804.33
ARS02	654542.50N	0181036.65W	N 6545.71	W 01810.61
ARS03	654014.00N	0182500.28W	N 6540.23	W 01825.00
PERUR	652627.24N	0185733.83W	N 6526.45	W 01857.56
ASKUR	651144.00N	0184130.00W	N 6511.73	W 01841.50