

Akureyri (SID) - ICAO - RWY01-RNAV(RNP) - PERUR 2S, ASKUR 2S

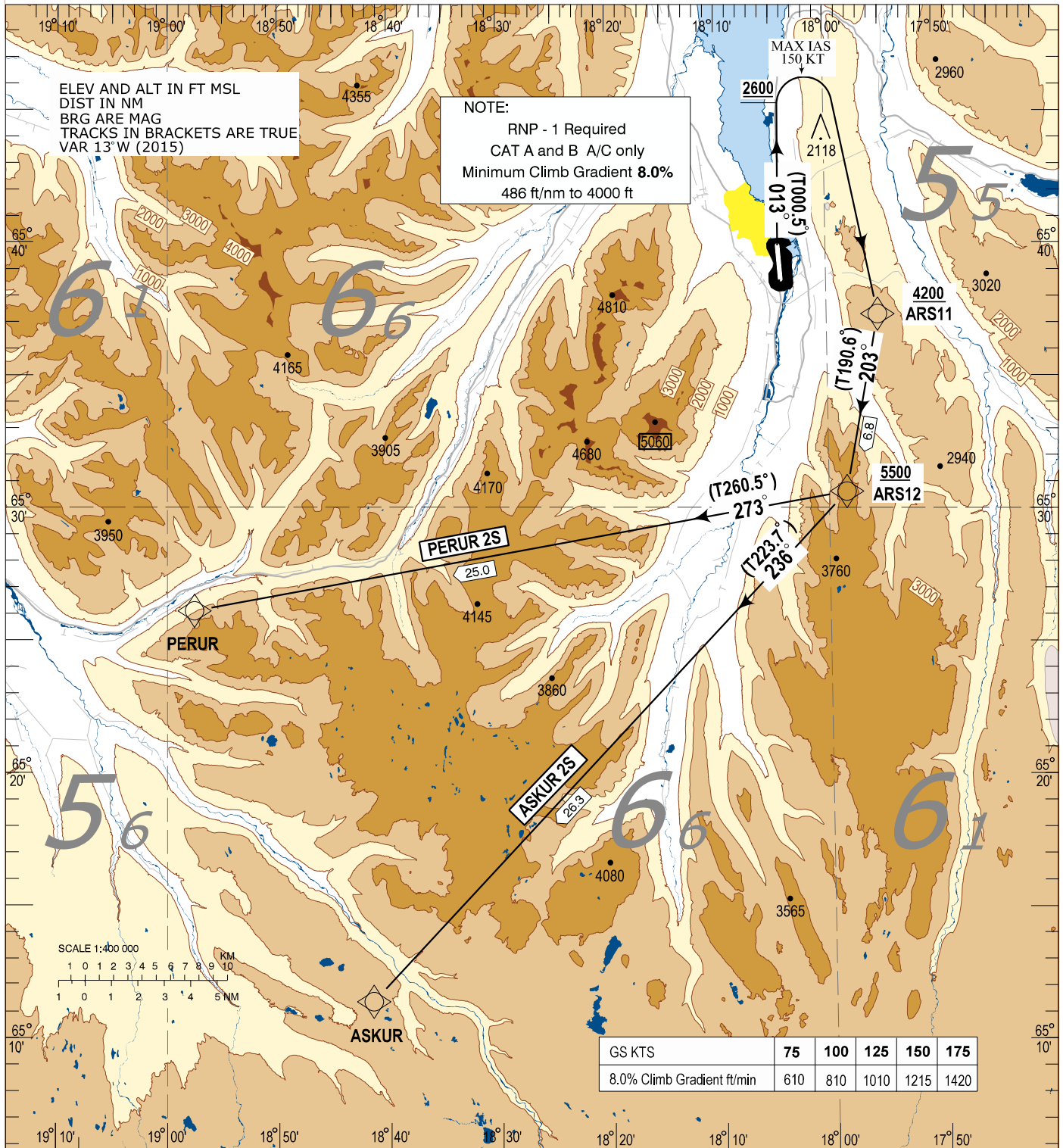
STANDARD DEPARTURE CHART -
INSTRUMENT (SID) - ICAO
SCALE 1:400,000

TRANSITION
ALTITUDE 7000

AKUREYRI TWR / APP	118.200
AKUREYRI AFIS	118.200
AKUREYRI RADAR	118.700
REYKJAVIK ACC	119.700

BIAR - AKUREYRI
RNAV(RNP) SID RWY 01
PERUR 2S
ASKUR 2S

AD ELEV 7



CHANGES: FREQ.

PERUR 2S:

Climb on course 013°, passing 2600 ft turn right (MAX IAS 150 kts) direct ARS11, turn right on course 203° to ARS12, right turn on course 273° to PERUR.
Minimum Climb Gradient 8.0% 486 ft/nm up to 4000 ft.

ASKUR 2S:

Climb on course 013°, passing 2600 ft turn right (MAX IAS 150 kts) direct ARS11, turn right on course 203° to ARS12, right turn on course 236° to ASKUR.
Minimum Climb Gradient 8.0% 486 ft/nm up to 4000 ft.

PERUR 2 S RNAV(RNP) SID RWY 01

Serial Number	Path Descriptor	Waypoint Identifier	Fly-over	Course / Track °M(°T)	Magnetic Variation	Distance	Turn Direction	Altitude (ft)	Speed (kt/h)	VPA/TCH	Navigation Specification
001	CA		-	013 (000.5)			R	+2600	-150		RNP I
002	DF	ARS11	-		+12.8		R	+4200			RNP I
003	TF	ARS12	-	203 (190.6)	+12.8	6.8	R	+5500			RNP I
004	TF	PERUR	-	273 (260.5)	+13.3	25.0					RNP I

ASKUR 2 S RNAV(RNP) SID RWY 01

Serial Number	Path Descriptor	Waypoint Identifier	Fly-over	Course / Track °M(°T)	Magnetic Variation	Distance	Turn Direction	Altitude (ft)	Speed (kt/h)	VPA/TCH	Navigation Specification
001	CA		-	013 (000.5)			R	+2600	-150		RNP I
002	DF	ARS11	-		+12.8		R	+4200			RNP I
003	TF	ARS12	-	203 (190.6)	+12.8	6.8	R	+5500			RNP I
004	TF	ASKUR	-	236 (223.7)	+13.1	26.3					RNP I

Waypoint coordinates

Waypoint Identifier	Coordinates		Display	
ARS11	653724.47N	0175524.32W	N 6537.41	W 01755.41
ARS12	653045.11N	0175824.97W	N 6530.75	W 01758.42
PERUR	652627.24N	0185733.83W	N 6526.45	W 01857.56
ASKUR	651144.00N	0184130.00W	N 6511.73	W 01841.50