

Akureyri Standard Departure Chart - Instrument (SID) - ICAO RWY 01 AR - 1

STANDARD DEPARTURE CHART -
INSTRUMENT (SID) - ICAO
SCALE 1:400.000

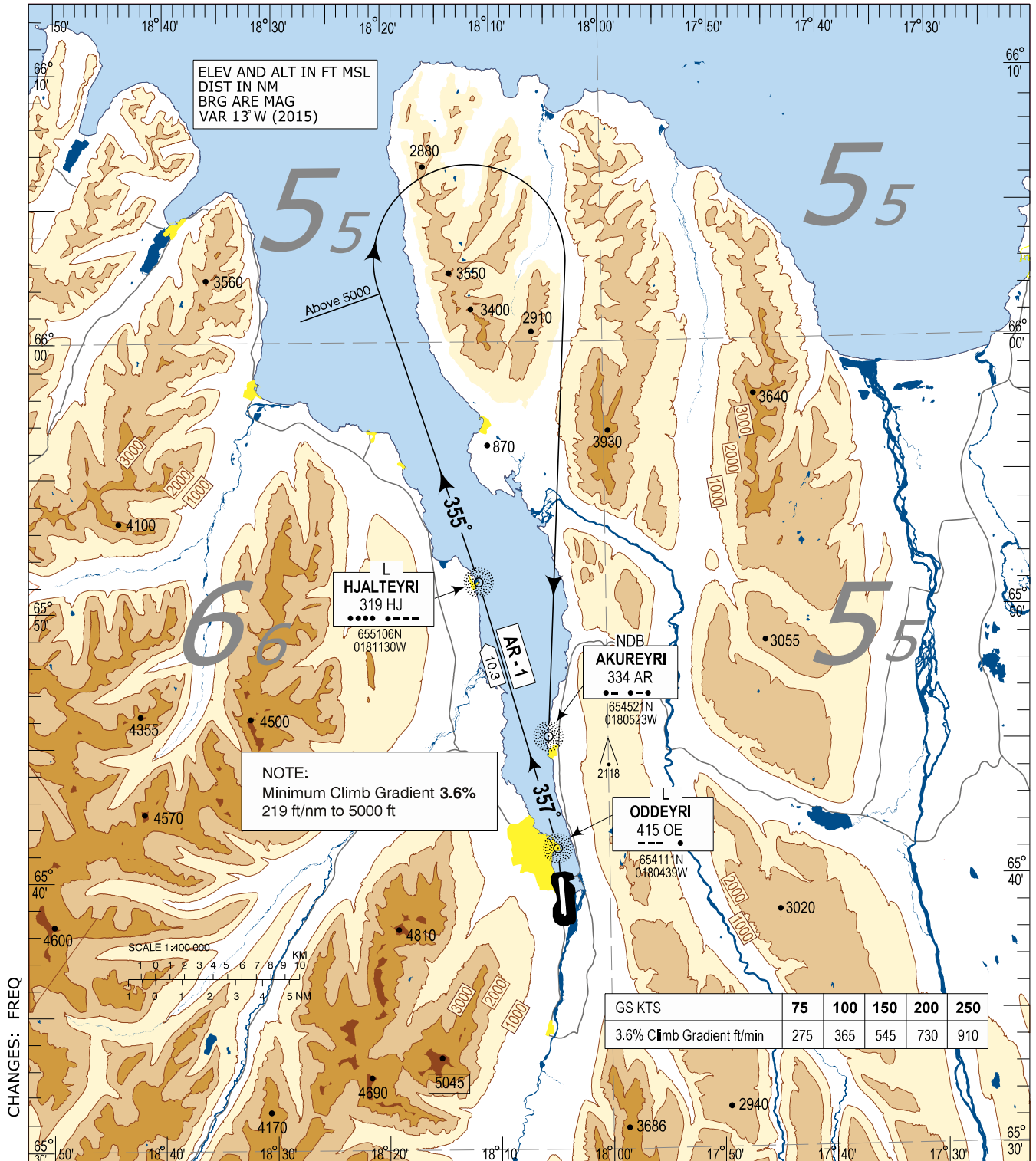
TRANSITION
ALTITUDE 7000

AKUREYRI TWR / APP	118.200
AKUREYRI AFIS	118.200
AKUREYRI RADAR	118.700
REYKJAVIK ACC	119.700

BIAR - AKUREYRI

AD ELEV 7

SID RWY 01
AR - 1



AR - 1:

Climb direct to OE Locator. Then left turn on track 357° to HJ Locator.
Then left turn on track 355° from HJ Locator until passing 5000'.
Turn right direct to AR NDB climbing to cleared ALT/FL.

THIS PAGE INTENTIONALLY LEFT BLANK