

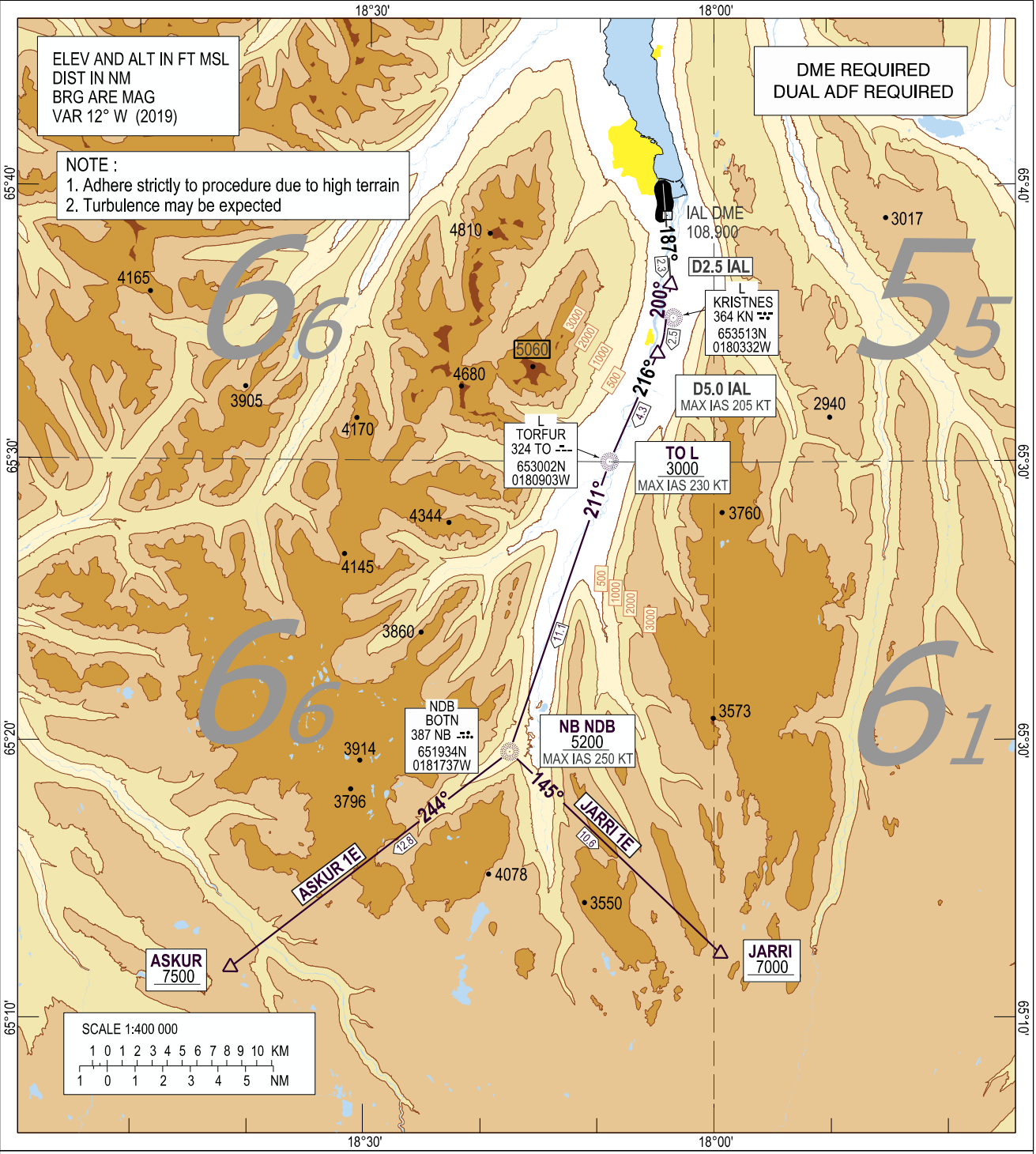
Akureyri SID RWY 19 - ASKUR 1E, JARRI 1E

STANDARD
DEPARTURE CHART -
INSTRUMENT (SID) -
ICAO

TRANSITION
ALTITUDE 7000
AERODROME ELEV 7

AKUREYRI TWR / APP	118.200
AKUREYRI AFIS	118.200
REYKJAVIK ACC	119.700

BIAR - AKUREYRI
SID RWY 19
ASKUR 1E, JARRI 1E



GS KT	75	100	125	150	175	200	225	250	275
5.8% Climb Gradient	440	590	730	880	1030	1170	1320	1470	1620
3.3% Climb Gradient	250	335	420	500	585	670	750	835	920

BIAR - AKUREYRI

STANDARD DEPARTURE ROUTES-
INSTRUMENT (SID) – ICAO

SID RWY 19

ASKUR 1E, JARRI 1E

GENERAL: Maximum speed below FL100; 250 KT IAS unless otherwise stated under RESTRICTIONS or instructed by ATC.

RADIO COMMUNICATION FAILURE: Set transponder to A 7600

Proceed in accordance with GEN 3.4.4.12.3 and for flights with oceanic clearance ENR 1.8.6

NOTE: Change to STANDARD QNH at Transition Altitude or passing last altitude restriction if lower.

DESIGNATOR	ROUTE	RESTRICTIONS	After Take-Off	
			CLIMB TO	Contact
ASKUR 1E (ASKUR ONE ECHO DEPARTURE)	Climb on track 187°, at D2.5 IAL immediate right turn on track 200° to intercept 216° from KN L to TO L, after TO L on track 211° to NB NDB, then right turn on track 244° to ASKUR.	A MNM climb gradient of 5.8% i.e. 352 FT/NM is required up to 3000 FT, thereafter MNM climb gradient of 3.3% i.e 201 FT/NM MAX IAS 205 KT until 5.0 DME IAL MAX IAS 230 KT at TO L MAX IAS 250 KT at NB NDB Cross TO L at 3000 FT or above. Cross NB NDB at 5200 FT or above. Cross ASKUR at 7500 FT or above	As cleared by ATC	Reykjavik Control 119.700 when instructed.
JARRI 1E (JARRI ONE ECHO DEPARTURE)	Climb on track 187°, at D2.5 IAL immediate right turn on track 200° to intercept 216° from KN L to TO L, after TO L on track 211° to NB NDB, then left turn on track 145° to JARRI	A MNM climb gradient of 5.8% i.e. 352 FT/NM is required up to 3000 FT, thereafter MNM climb gradient of 3.3% i.e 201 FT/NM MAX IAS 205 KT until 5.0 DME IAL MAX IAS 230 KT at TO L MAX IAS 250 KT at NB NDB Cross TO L at 3000 FT or above. Cross NB NDB at 5200 FT or above. Cross JARRI at 7000 FT or above	As cleared by ATC	Reykjavik Control 119.700 when instructed