

EGILSSTADIR NDB RWY 22

AIP Iceland
FLUGMÁLAHANDBÓK

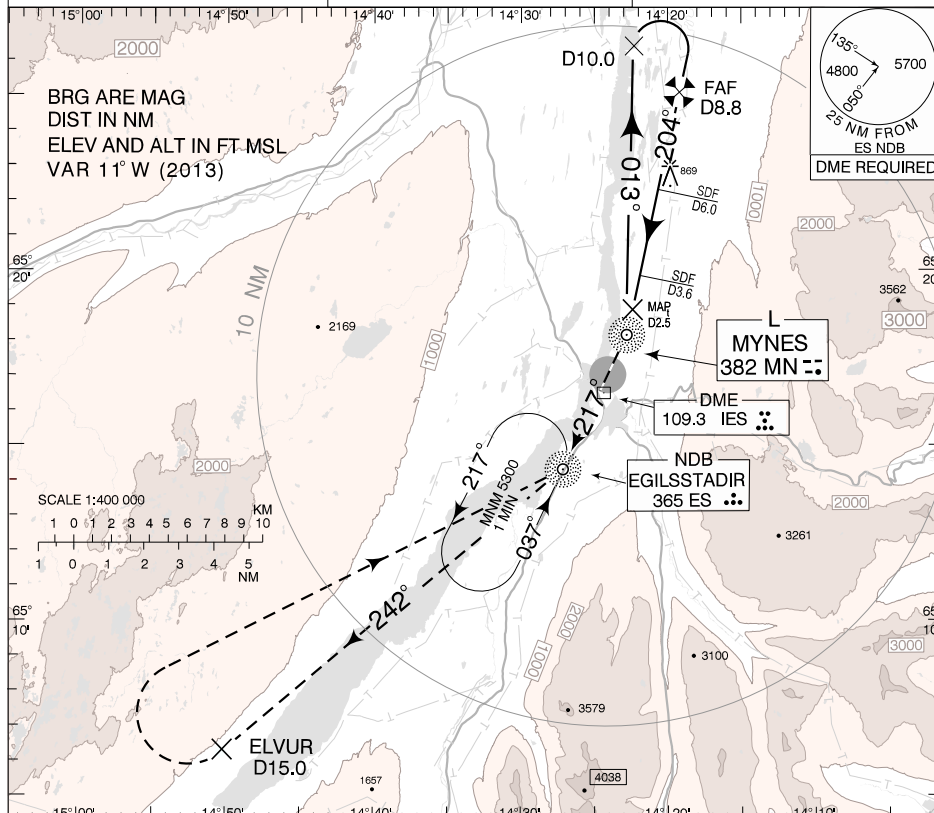
ELEV THR RWY 22	75
AD ELEV	75

BIEG
30 MAY 2014

INSTRUMENT APPROACH
CHART - ICAO

EGILSSTADIR AFIS	119.4
ACC	119.7

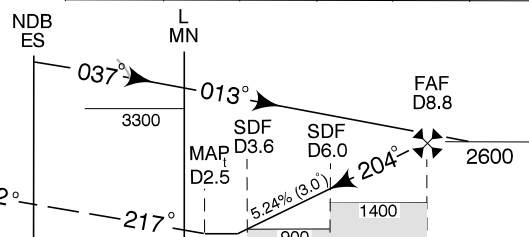
EGILSSTADIR
NDB RWY 22



TRANSITION ALT 7000

IES DME	4.0	5.0	6.0	7.0	8.0
Altitude	1070	1390	1710	2030	2350

MISSED APPROACH
Passing MN L turn right on track 217° to ES NDB. Passing ES NDB turn right on track 242° from ES NDB at 15.0 DME IES (ELVUR) or passing 4300 feet whichever is earlier right turn direct ES NDB climbing to 5300 feet.



THR ELEV 75

NM from THR RWY 22

Timing not authorized for defining the MAP

GS	kt	80	100	120	140	160
FAF(D8.8)-MAP (D2.5) 6.3 NM	MIN:SEC	4:44	3:47	3:09	2:42	2:22
Rate of descent (5.2%)	ft/MIN	420	530	640	750	850

OCA (H)	A	B	Remarks
NDB-DME	830 (755)	830 (755)	
CIRCLING	980 (905)	1050 (975)	Only west of aerodrome

Pub. by: /Útg.: ISAVIA

CHANGES: EDITORIAL

THIS PAGE INTENTIONALLY LEFT BLANK