

Egilsstadir SID RWY 04 - VAD 1A / VAD 1B, BRUSI 1, FELLI 1

AIP Iceland
FLUGMÁLAHANDBÓK

EGILSSTAÐIR SID
RWY 04

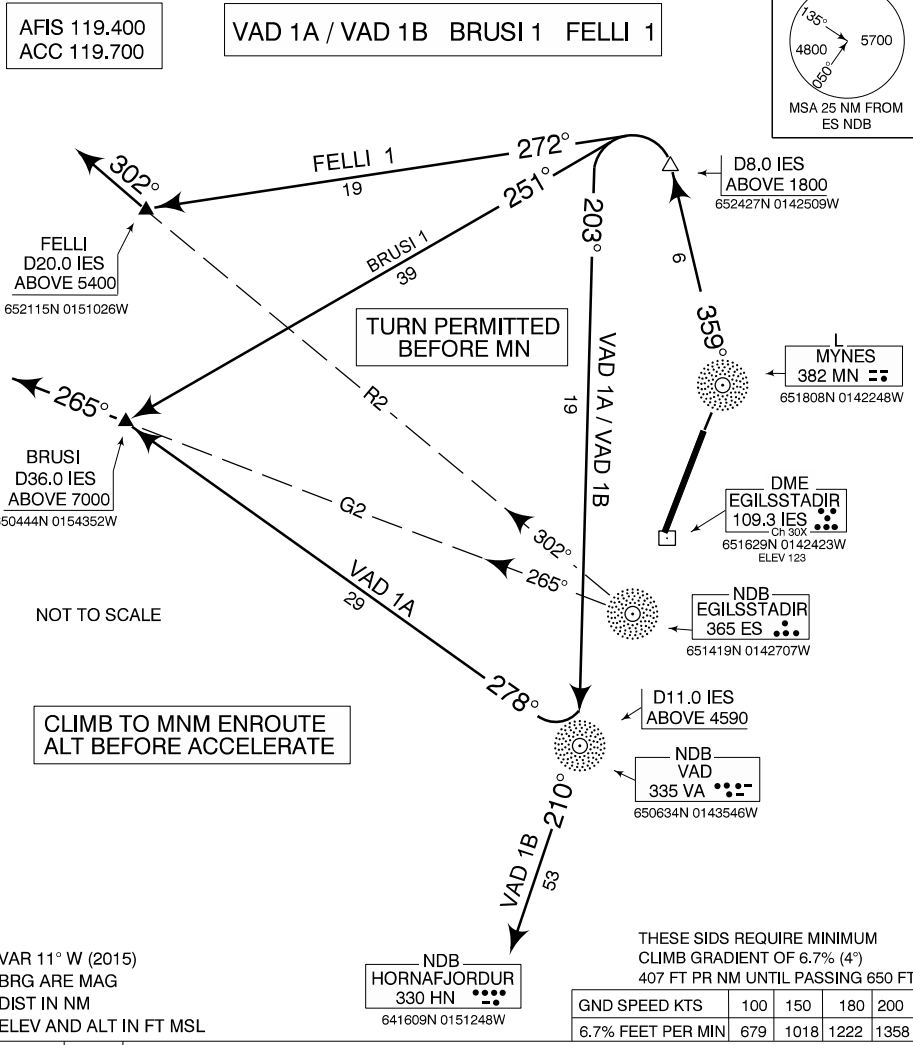
TRANS LEVEL BY ATC
TRANS ALT 7000 FET

BIEG
4 MAR 2016

STANDARD DEPARTURE CHART -
INSTRUMENT (SID) - ICAO

STRICT ADHERENCE WITHIN THE LIMITS OF PERFORMANCE CRITERIA IS
MANDATORY. THE ROUTES MAY ADDITIONALLY BE SUPPLEMENTED BY ALTITUDE
AND/OR FLIGHT LEVEL RESTRICTION IF UNABLE TO COMPLY WITH SID ADVISE
ATC PRIOR TO TAKE-OFF.

AD ELEV 76



CHANGES: MSA, EDITORIAL.

SID	RWY	ROUTING
FELLI 1	04	TURN LEFT WHEN FEASIBLE BUT NOT LATER THAN 2.5 DME AND INTERCEPT TRACK 359° FROM MN locator. AT 8 DME TURN LEFT ON TRACK 272° TO FELLI.
BRUSI 1	04	TURN LEFT WHEN FEASIBLE BUT NOT LATER THAN 2.5 DME AND INTERCEPT TRACK 359° FROM MN locator. AT 8 DME TURN LEFT ON TRACK 251° TO BRUSI.
VAD 1A	04	TURN LEFT WHEN FEASIBLE BUT NOT LATER THAN 2.5 DME AND INTERCEPT TRACK 359° FROM MN locator. AT 8 DME TURN LEFT ON TRACK 203° TO VA NDB. THEN TURN RIGHT ON TRACK 278° TO BRUSI.
VAD 1B	04	TURN LEFT WHEN FEASIBLE BUT NOT LATER THAN 2.5 DME AND INTERCEPT TRACK 359° FROM MN locator. AT 8 DME TURN LEFT ON TRACK 203° TO VA NDB. THEN TURN ON TRACK 210° TO HN NDB.

Pub. by / Útg.: ISAVIA

THIS PAGE INTENTIONALLY LEFT BLANK