

Egilsstaðir SID RWY 22 - VAD 2, ELVUR 2, BRUSI 2, FELLI 2

AIP Iceland
FLUGMÁLAHANDBÓK

EGILSSTAÐIR SID
RWY 22

TRANS LEVEL BY ATC
TRANS ALT 7000 FET

BIEG
04 MAR 2016

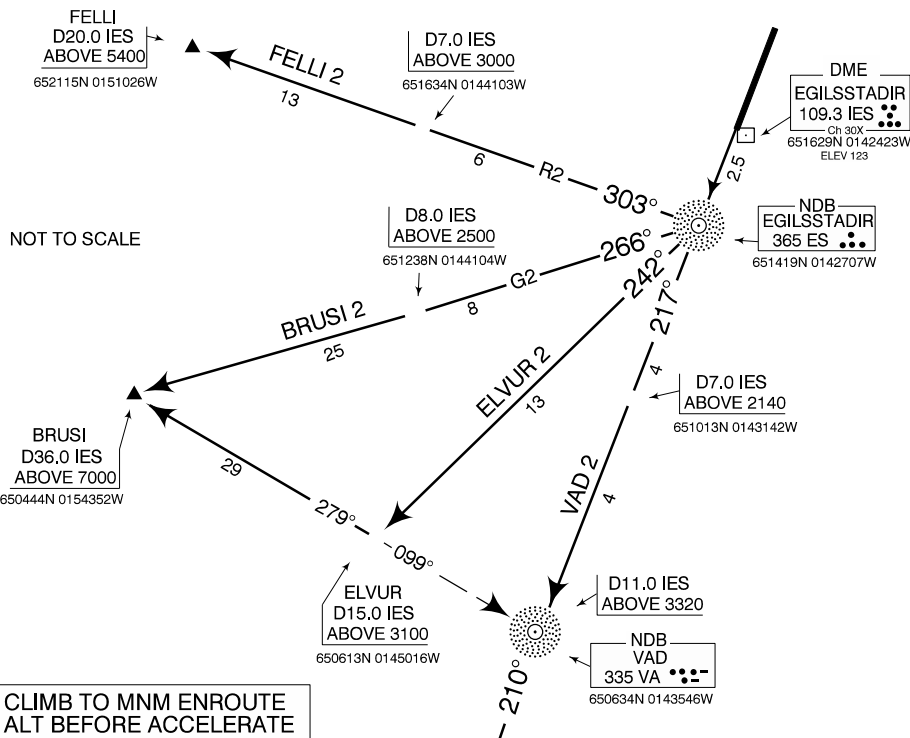
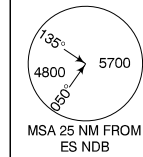
STANDARD DEPARTURE CHART -
INSTRUMENT (SID) - ICAO

STRICT ADHERENCE WITHIN THE LIMITS OF PERFORMANCE CRITERIA IS
MANDATORY. THE ROUTES MAY ADDITIONALLY BE SUPPLEMENTED BY ALTITUDE
AND/OR FLIGHT LEVEL RESTRICTION. IF UNABLE TO COMPLY WITH SID ADVISE
ATC PRIOR TO TAKE-OFF.

AD ELEV 76

AFIS 119.400
ACC 119.700

VAD 2 ELVUR 2 BRUSI 2 FELLI 2



CHANGES: MSA, EDITORIAL

THESE SIDs REQUIRE MINIMUM CLIMB GRADIENT OF:

	GND SPEED KTS	100	150	180	200
BRUSI 2	4.3% FEET PR MIN	436	654	784	871
VAD 2	4.8% FEET PR MIN	487	730	876	973
FELLI 2	5.0% FEET PER MIN	507	760	912	1013

SID	RWY	ROUTING
FELLI 2	22	CLIMB TO ES NDB. TURN RIGHT ON TRACK 303° DIRECT TO FELLI.
BRUSI 2	22	CLIMB TO ES NDB. TURN RIGHT ON TRACK 266° DIRECT TO BRUSI.
ELVUR 2	22	CLIMB TO ES NDB. TURN RIGHT ON TRACK 242°. DIRECT TO ELVUR. THEN RIGHT TURN ON TRACK 279° TO BRUSI.
VAD 2	22	CLIMB DIRECT TO VA NDB ON TRACK 217°. THEN CONTINUE ON TRACK 210° TO HN NDB.

Pub. by: ISAVIA

THIS PAGE INTENTIONALLY LEFT BLANK