

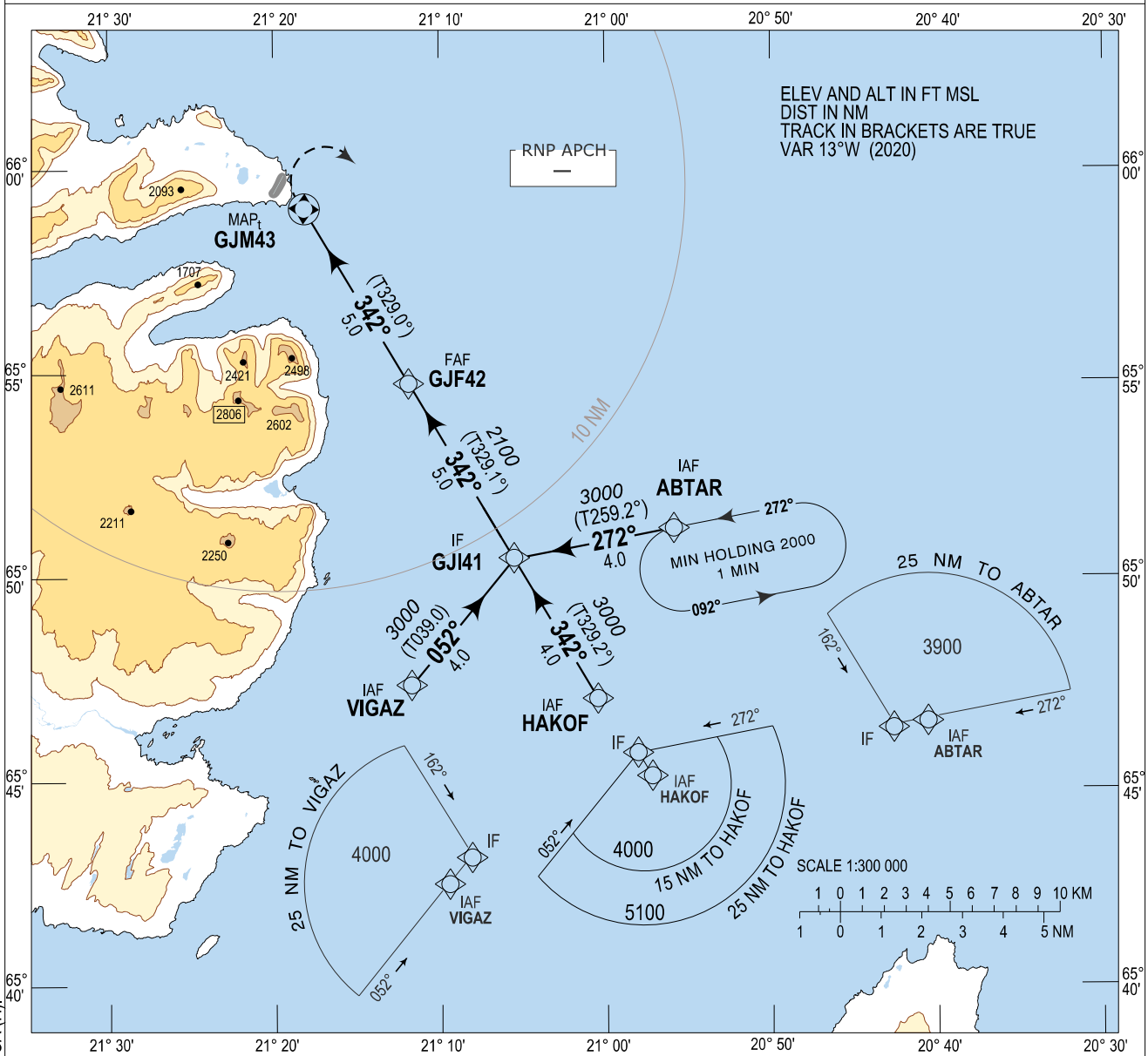
Gjogur RNP A Instrument Approach Chart

INSTRUMENT
APPROACH
CHART - ICAO

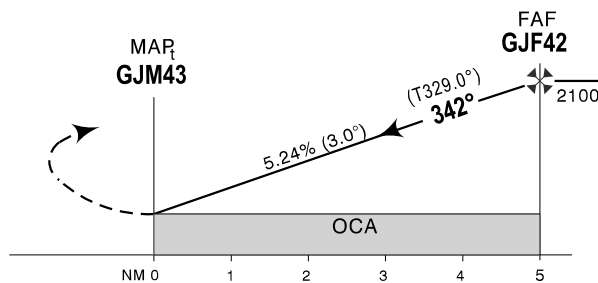
AD ELEV 90 FT

GJOGUR AFIS	118.600
ACC	119.700

BIGJ - GJOGUR
RNP A



MISSED APPROACH:
RIGHT TURN DIRECT ABTAR
AND HOLD AT 3000ft.



OCA (H)	A	B*	B
CIRCLING	510 (420)	590 (500)	1840 (1750)

DISTANCE TO GJM43 IN NM	5	4	3	2	1
ALTITUDE	2100	1780	1460	1150	830

REMARKS:
CIRCLE ONLY EAST OF RWY.
*AUTH. REQUIRED 25° BANK WHEN CIRCLING

Timing not authorized for defining MAP_t

GS	kt	80	100	120	140	160
GJF42 - GJM43 (5.0NM)	MIN:SEC	3:45	3:00	2:30	2:09	1:52
Rate of descent (5.24%)	ft/MIN	420	530	640	740	850

CHANGES: Initial legs, MA procedure, OCA (H)

BIGJ RNP A
Recommended Coding Table

Serial Number	Path Descriptor	Waypoint Identifier	Fly-over	Course / Track °M(°T)	Magnetic Variation	Distance	Turn Direction	Altitude (ft)	Speed (kt/h)	VPA/TCH	Navigation Specification
010	IF	VIGAZ	-		+13.0			A4000+			RNP APCH
020	TF	GJI41	-	052 (039.0)	+13.0	4.0	L	A3000+			RNP APCH
010	IF	HAKOF	-		+13.0			A4000+			RNP APCH
020	TF	GJI41	-	342 (329.2)	+13.0	4.0		A3000+			RNP APCH
010	IF	ABTAR	-		+13.0			A3400+			RNP APCH
020	TF	GJI41	-	272 (259.2)	+13.0	4.0	R	A3000+			RNP APCH
030	TF	GJF42	-	342 (329.1)	+13.0	5.0		A2100+		3.00°	RNP APCH
040	TF	GJM43	Y	342 (329.0)	+13.0	5.0				3.00°	RNP APCH
050	DF	ABTAR	-		+13.0		R				RNP APCH
060	HM	ABTAR	Y	272 (259.2)	+13.0		L	A3000			RNP APCH

Waypoint coordinates

Waypoint Identifier	Coordinates		Display	
	LAT	LON	LAT	LON
VIGAZ	654727.12N	0211137.55W	N 6547.45	W 02111.63
HAKOF	654707.53N	0210031.02W	N 6547.13	W 02100.52
ABTAR	655117.75N	0205556.60W	N 6551.30	W 02055.94
GJI41	655032.84N	0210530.10W	N 6550.55	W 02105.50
GJF42	655449.25N	0211145.81W	N 6554.82	W 02111.76
GJM43	655905.39N	0211803.59W	N 6559.09	W 02118.06