

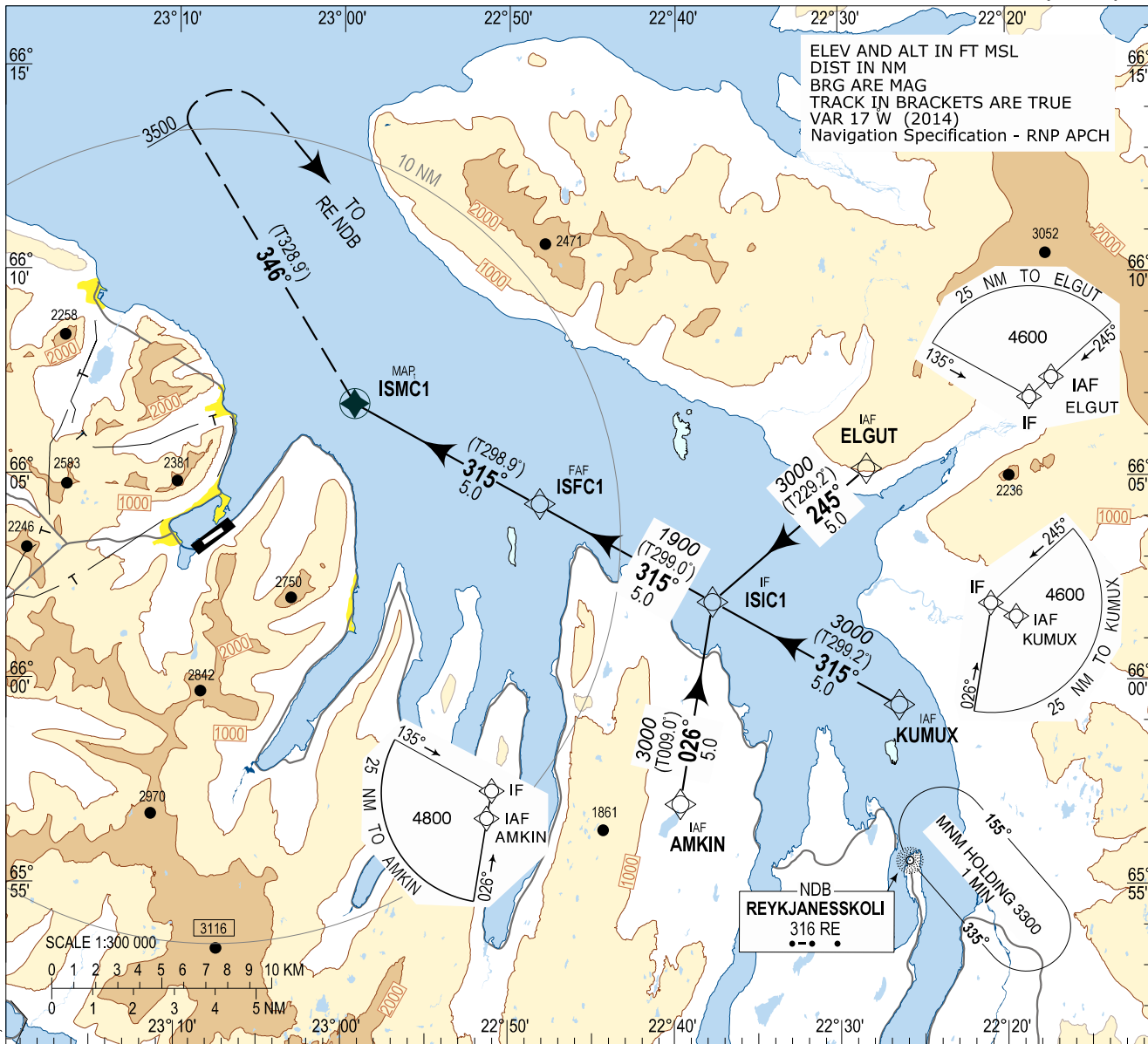
INSTRUMENT APPROACH
CHART - ICAO AERODROME ELEV 8

ISAFJORDUR AFIS 118.800
REYKJAVIK ACC 119.700

CLOUD BREAK PROCEDURE

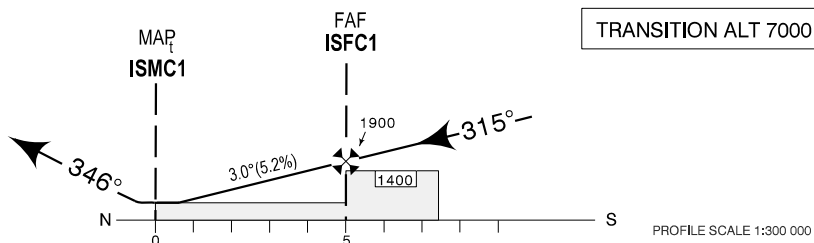
BIIS - ISAFJORDUR

RNAV(GNSS) D



CHANGES: TEXT IN REMARKS, EDITORIAL

MISSED APPROACH:
RIGHT CLIMBING TURN ON COURSE 346°
PASSING 3500 RIGHT TURN DIRECT TO
RE NDB AND HOLD AT 4500.
NO TURN BEFORE MAP_f



| OCA (H) | A | B | REMARKS |
|-------------------|-----------|-----------|--|
| LNAV | 500 (492) | 500 (492) | PROCEED VFR FROM ISMC1 TO ISAFJORDUR AIRPORT, 244° - 4.5NM |
| CLOUD PENETRATION | | | |

| DIST TO ISMC1 | 1 | 2 | 3 | 4 | 5 |
|---------------|-----|-----|------|------|------|
| ALTITUDE | 620 | 940 | 1260 | 1580 | 1900 |

Timing not authorized for defining MAP_f

| GS | kt | 75 | 100 | 150 | 180 |
|-----------------------------|---------|------|------|------|------|
| ISFC1 - ISMC1 (5.0 NM) | MIN:SEC | 4:00 | 3:00 | 2:00 | 1:40 |
| Rate of descent 3.0° (5.2%) | ft/MIN | 395 | 527 | 790 | 948 |

**BIIS RNAV(GNSS) D (Cloud Break Procedure)
Instrument Procedure Coding Tables**

BIIS RNAV(GNSS) D via AMKIN

| Serial Number | Path Descriptor | Waypoint Identifier | Fly-over | Course / Track °M(°T) | Magnetic Variation | Distance | Turn Direction | Altitude (ft) | Speed (kt/h) | VPA/TCH | Navigation Specification |
|---------------|-----------------|---------------------|----------|-----------------------|--------------------|----------|----------------|---------------|--------------|---------|--------------------------|
| 001 | IF | AMKIN | | | +16.6 | | | +4500 | | | RNP APCH |
| 002 | TF | ISICI | | 026 (009.0) | +16.3 | 5.0 | L | 3500 | | | RNP APCH |
| 003 | TF | ISFCI | | 315 (299.0) | +16.4 | 5.0 | | 1900 | | | RNP APCH |
| 004 | TF | ISMCI | Y | 315 (298.9) | +16.6 | 5.0 | R | | | | RNP APCH |
| 005 | CA | | | 346 (328.9) | | | | +3500 | | | RNP APCH |
| 006 | DF | RE | | | +16.3 | | R | | | | RNP APCH |
| 007 | HM | RE | Y | 335 (319.2) | +16.3 | | R | 4500 | | | RNP APCH |

BIIS RNAV(GNSS) D via KUMUX

| Serial Number | Path Descriptor | Waypoint Identifier | Fly-over | Course / Track °M(°T) | Magnetic Variation | Distance | Turn Direction | Altitude (ft) | Speed (kt/h) | VPA/TCH | Navigation Specification |
|---------------|-----------------|---------------------|----------|-----------------------|--------------------|----------|----------------|---------------|--------------|---------|--------------------------|
| 001 | IF | KUMUX | | | +16.2 | | | +4500 | | | RNP APCH |
| 002 | TF | ISICI | | 315 (299.2) | +16.3 | 5.0 | | 3500 | | | RNP APCH |
| 003 | TF | ISFCI | | 315 (299.0) | +16.4 | 5.0 | | 1900 | | | RNP APCH |
| 004 | TF | ISMCI | Y | 315 (298.9) | +16.6 | 5.0 | R | | | | RNP APCH |
| 005 | CA | | | 346 (328.9) | | | | +3500 | | | RNP APCH |
| 006 | DF | RE | | | +16.3 | | R | | | | RNP APCH |
| 007 | HM | RE | Y | 335 (319.2) | +16.3 | | R | 4500 | | | RNP APCH |

BIIS RNAV(GNSS) D via ELGUT

| Serial Number | Path Descriptor | Waypoint Identifier | Fly-over | Course / Track °M(°T) | Magnetic Variation | Distance | Turn Direction | Altitude (ft) | Speed (kt/h) | VPA/TCH | Navigation Specification |
|---------------|-----------------|---------------------|----------|-----------------------|--------------------|----------|----------------|---------------|--------------|---------|--------------------------|
| 001 | IF | ELGUT | | | +16.2 | | | +4500 | | | RNP APCH |
| 002 | TF | ISICI | | 245 (229.2) | +16.3 | 5.0 | R | 3500 | | | RNP APCH |
| 003 | TF | ISFCI | | 315 (299.0) | +16.4 | 5.0 | | 1900 | | | RNP APCH |
| 004 | TF | ISMCI | Y | 315 (298.9) | +16.6 | 5.0 | R | | | | RNP APCH |
| 005 | CA | | | 346 (328.9) | | | | +3500 | | | RNP APCH |
| 006 | DF | RE | | | +16.3 | | R | | | | RNP APCH |
| 007 | HM | RE | Y | 335 (319.2) | +16.3 | | R | 4500 | | | RNP APCH |

Waypoint coordinates

| Waypoint Identifier | Coordinates | | Display | |
|---------------------|-------------|-------------|-----------|-----------|
| AMKIN | 655700.29N | 0223938.40W | N 6557.00 | W02238.64 |
| KUMUX | 655929.51N | 0222658.86W | N 6559.49 | W02226.98 |
| ELGUT | 660511.30N | 0222827.34W | N 6605.19 | W02228.46 |
| ISICI | 660155.54N | 0223743.45W | N 6601.93 | W02237.72 |
| ISFCI | 660420.81N | 0224830.09W | N 6604.35 | W02248.50 |
| ISMCI | 660645.35N | 0225918.78W | N 6606.76 | W02259.31 |
| RE | 655535.35N | 0222553.54W | N 6555.59 | W02225.89 |