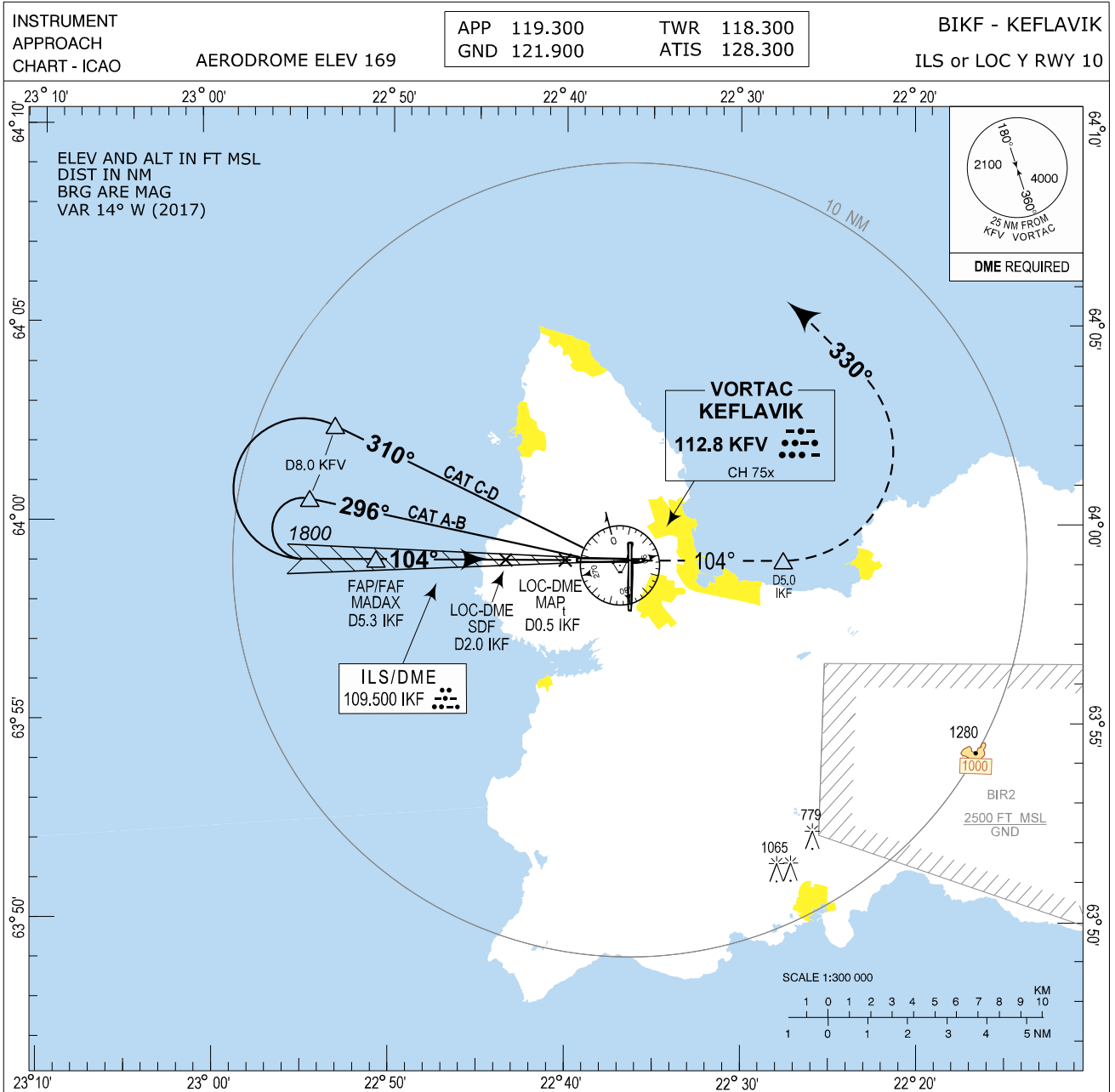


Keflavik ILS or LOC Y RWY 10 Instrument Approach Chart - ICAO



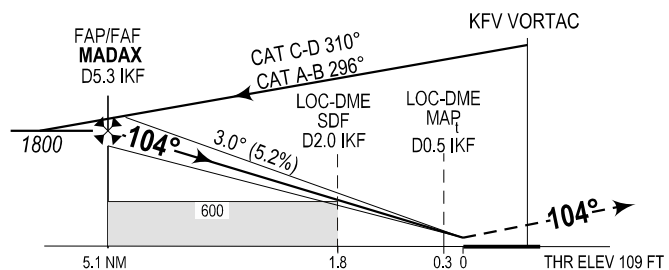
MISSED APPROACH:

Climb on RWY track 104°, at D5.0 IKF turn left to track 330°, climb to 3000, expect vectoring by Keflavik APP.

RCF:

Continue on track 330°, passing D20.0 KfV turn left direct KfV at 3000 for new approach.

TRANSITION ALT 7000



CHANGES: BEARINGS, RWY NR.

SCALE 1:300 000

OCA (H)	A	B	C	D	Remarks	
ILS	CAT I	277 (168)	289 (180)	297 (188)	308 (199)	
	CAT II	157 (48)	170 (61)	182 (73)	196 (87)	
LOC-DME	370 (261)	370 (261)	370 (261)	380 (271)	MAP at D0.5 IKF	
CIRCLING	600 (431)	670 (501)	870 (701)	940 (771)		

DME IKF	5	4	3	2	1
ALTITUDE	1720	1395	1070	750	430

Timing not authorized for defining MAP

GS	kt	75	100	120	140	160	180
FAF-MAP (4.8 NM)	MIN:SEC	3:50	2:53	2:24	2:03	1:48	1:36
Rate of descent (5.2%)	ft/MIN	400	530	640	740	850	960

THIS PAGE INTENTIONALLY LEFT BLANK