

Keflavik RNAV(GNSS) Z RWY 28 Instrument Approach Chart - ICAO

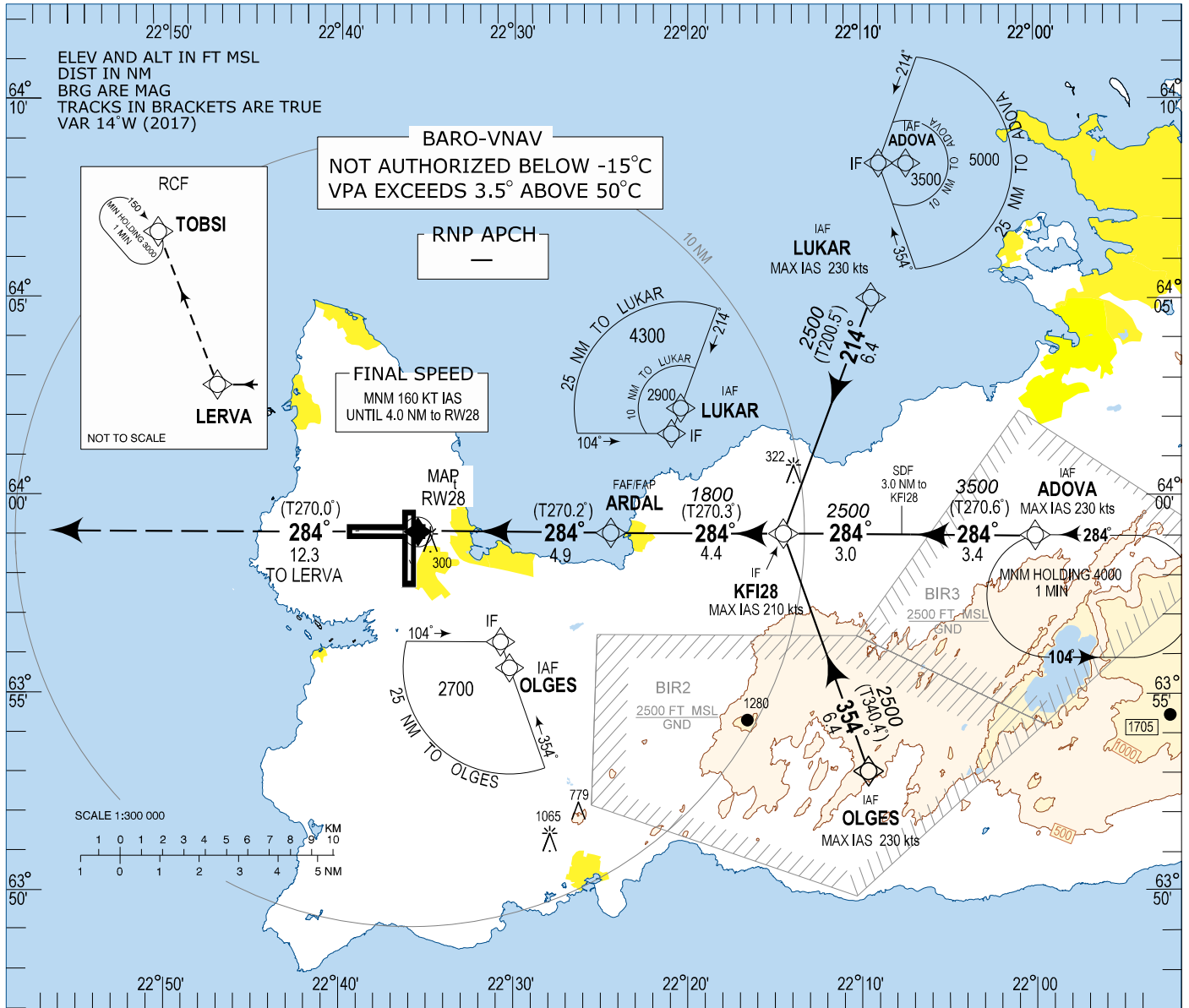
INSTRUMENT  
APPROACH  
CHART - ICAO

AERODROME ELEV 169

APP	119.300	TWR	118.300
GND	121.900	ATIS	128.300

BIKF - KEFLAVIK

RNAV(GNSS) Z RWY 28



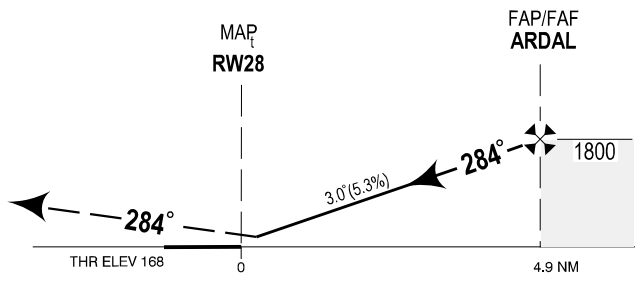
CHANGES: SDF symbol

TRANSITION ALT 7000

**MISSED APPROACH:**  
CLIMB ON COURSE 284° TO LERVA CLIMBING TO 3000.  
EXPECT VECTORING BY KEFLAVIK APP.

**RCF:**  
PASSING LERVA TURN RIGHT  
DIRECT TOBSI AND HOLD AT 3000

RDH 50



PROFILE SCALE 1:300 000

OCA (H)	A	B	C	D	Remarks
LNAV/VNAV	430 (262)	440 (272)	450 (282)	460 (292)	
LNAV	550 (382)	550 (382)	550 (382)	550 (382)	
CIRCLING	600 (431)	670 (501)	870 (701)	940 (771)	

DIST to RW28	1	2	3	4
ALTITUDE	540	860	1190	1510

Timing not authorized for defining MAP

GS	kt	75	100	120	140	160	180
ARDAL-RW28 (4.9NM)	MIN:SEC	3:55	2:56	2:27	2:06	1:50	1:38
Rate of descent (5.3%)	ft/MIN	400	540	650	750	860	970

**BIKF RNAV(GNSS) Z RWY28**  
**Recommended Coding Table**

Serial Number	Path Descriptor	Waypoint Identifier	Fly-over	Course / Track °M(°T)	Magnetic Variation	Distance	Turn Direction	Altitude (ft)	Speed (kt/h)	VPA/TCH	Navigation Specification
010	IF	OLGES	-		+13.9			A3500+	-230		RNP APCH
020	TF	KFI28	-	354 (340.4)	+14.0	6.4	L	A2500+	-210		RNP APCH
010	IF	ADOVA	-		+13.9			A3500+	-230		RNP APCH
020	TF	KFI28	-	284 (270.6)	+14.0	6.4		A2500+	-210		RNP APCH
010	IF	LUKAR	-		+14.0			A3500+	-230		RNP APCH
020	TF	KFI28	-	214 (200.5)	+14.0	6.4	R	A2500+	-210		RNP APCH
030	TF	ARDAL	-	284 (270.3)	+14.1	4.4		A1800+		3.04°	RNP APCH
040	TF	RW28	Y	284 (270.2)	+14.2	4.9				3.04°/ 50.0	RNP APCH
050	CF	LERVA	-	284 (270.0)	+14.5	12.3		A3000			RNP APCH

Waypoint coordinates

Waypoint Identifier	Coordinates		Display	
	LAT	LON	LAT	LON
OLGES	635304.53N	0220938.15W	N 6353.08	W 02209.64
ADOVA	635901.39N	0220000.20W	N 6359.02	W 02200.00
LUKAR	640502.15N	0220925.75W	N6405.04	W02209.43
KFI28	635904.39N	0221429.61W	N6359.07	W02214.49
ARDAL	635905.61N	0222425.57W	N6359.09	W02224.43
RW28	635906.15N	0223532.60W	N6359.10	W02235.54
LERVA	635903.77N	0230321.43W	N6359.07	W02303.36
TOBSI	642007.38N	0232550.71W	N6420.12	W02325.85