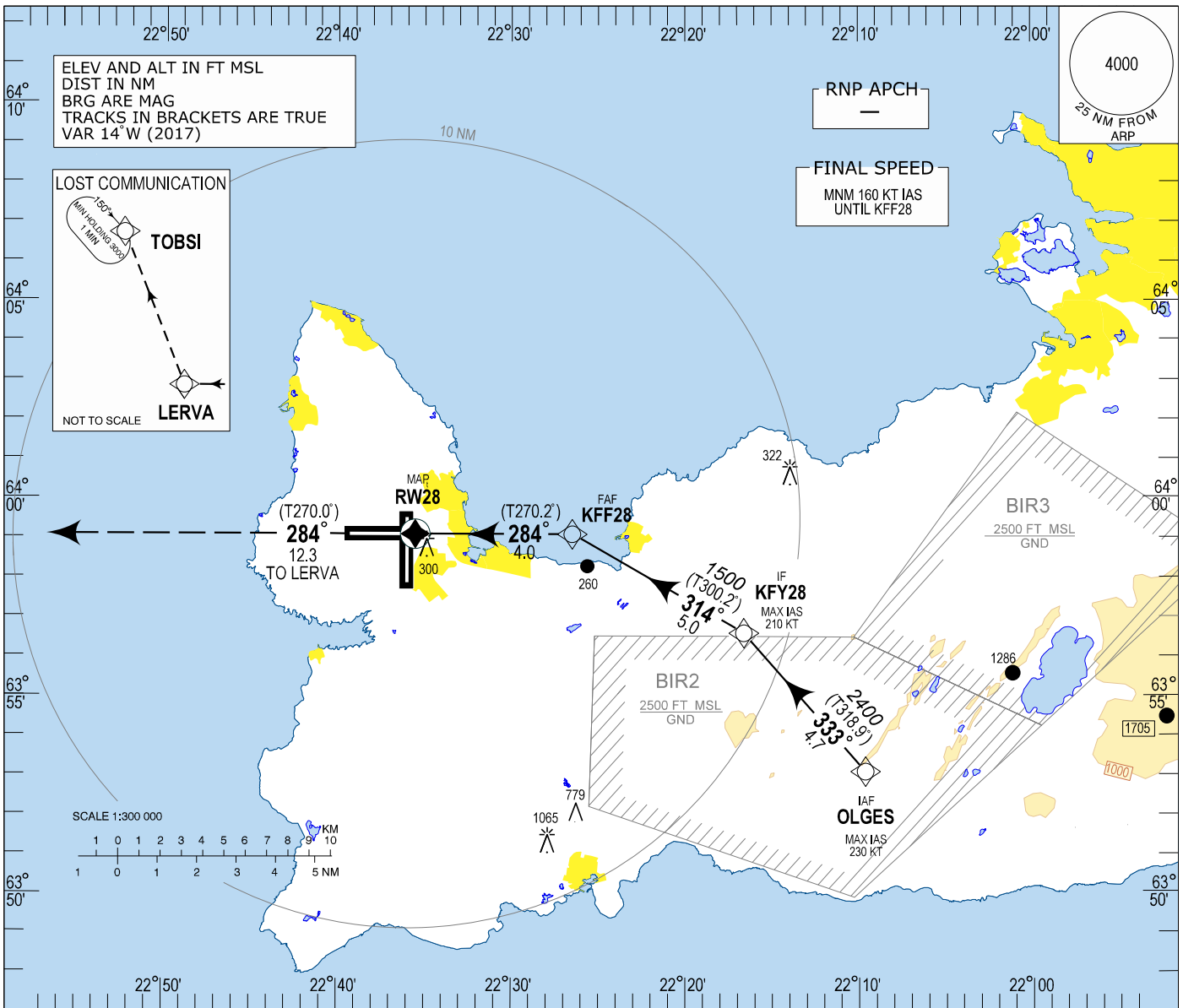


Keflavik RNAV(GNSS) Y RWY 28 Instrument Approach Chart - ICAO

INSTRUMENT APPROACH CHART - ICAO
AERODROME ELEV 169

APP	119.300	TWR	118.300
GND	121.900	ATIS	128.300

BIKF - KEFLAVIK
RNAV(GNSS) Y RWY 28

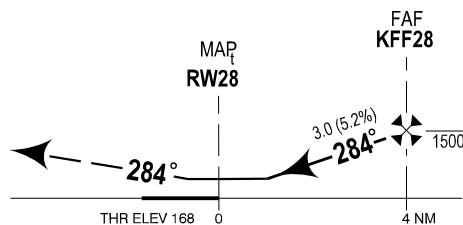


CHANGES: RWY NR. BEARINGS

TRANSITION ALT 7000

MISSED APPROACH:
CLIMB ON COURSE 284° TO LERVA CLIMBING TO 3000.
EXPECT VECTORED BY KEFLAVIK APP

RCF:
PASSING LERVA TURN RIGHT DIRECT
TOBSI AND HOLD AT 3000



PROFILE SCALE 1:300 000

OCA (H)	A	B	C	D
LNAV	550 (381)	550 (381)	550 (381)	550 (381)
CIRCLING	600 (431)	670 (501)	870 (701)	940 (771)

DIST from RW28	1	2	3
ALTITUDE	540	860	1180

Timing not authorized for defining MAP

GS	kt	80	100	120	140	160	180
KFF28 - RW28 (4.0NM)	MIN:SEC	3:01	2:25	2:00	1:43	1:30	1:20
Rate of descent (5.2%)	ft/MIN	420	530	640	750	850	950

BIKF RNAV(GNSS) Y RWY 28
Recommended Coding Table

Serial Number	Path Descriptor	Waypoint Identifier	Fly-over	Course / Track °M(°T)	Magnetic Variation	Distance	Turn Direction	Altitude (ft)	Speed (kt/h)	VPA/TCH	Navigation Specification
010	IF	OLGES	-		+13.9			A3500+	-230		RNP APCH
020	TF	KFY28	-	333 (318.9)	+14.1	4.7	L	A2400+	-210		RNP APCH
030	TF	KFF28	-	314 (300.2)	+14.2	5.0	L	A1500+		3.00°	RNP APCH
040	TF	RW28	Y	284 (270.2)	+14.2	4.0				3.00°/50	RNP APCH
050	CF	LERVA	-	284 (270.0)	+14.5	12.3		A3000			RNP APCH

Waypoint coordinates

Waypoint Identifier	Coordinates		Display	
	LAT	LON	LAT	LON
OLGES	635304.53N	0220938.15W	N 6354.08	W 02209.64
KFY28	635635.70N	0221637.18W	N 6356.60	W 02216.62
KFF28	635905.76N	0222625.66W	N 6359.10	W 02226.43
RW28	635906.15N	0223532.60W	N 6359.10	W 02235.54
LERVA	635903.77N	0230321.43W	N 6359.07	W 02303.36
TOBSI	642007.38N	0232550.71W	N 6420.12	W 02325.85