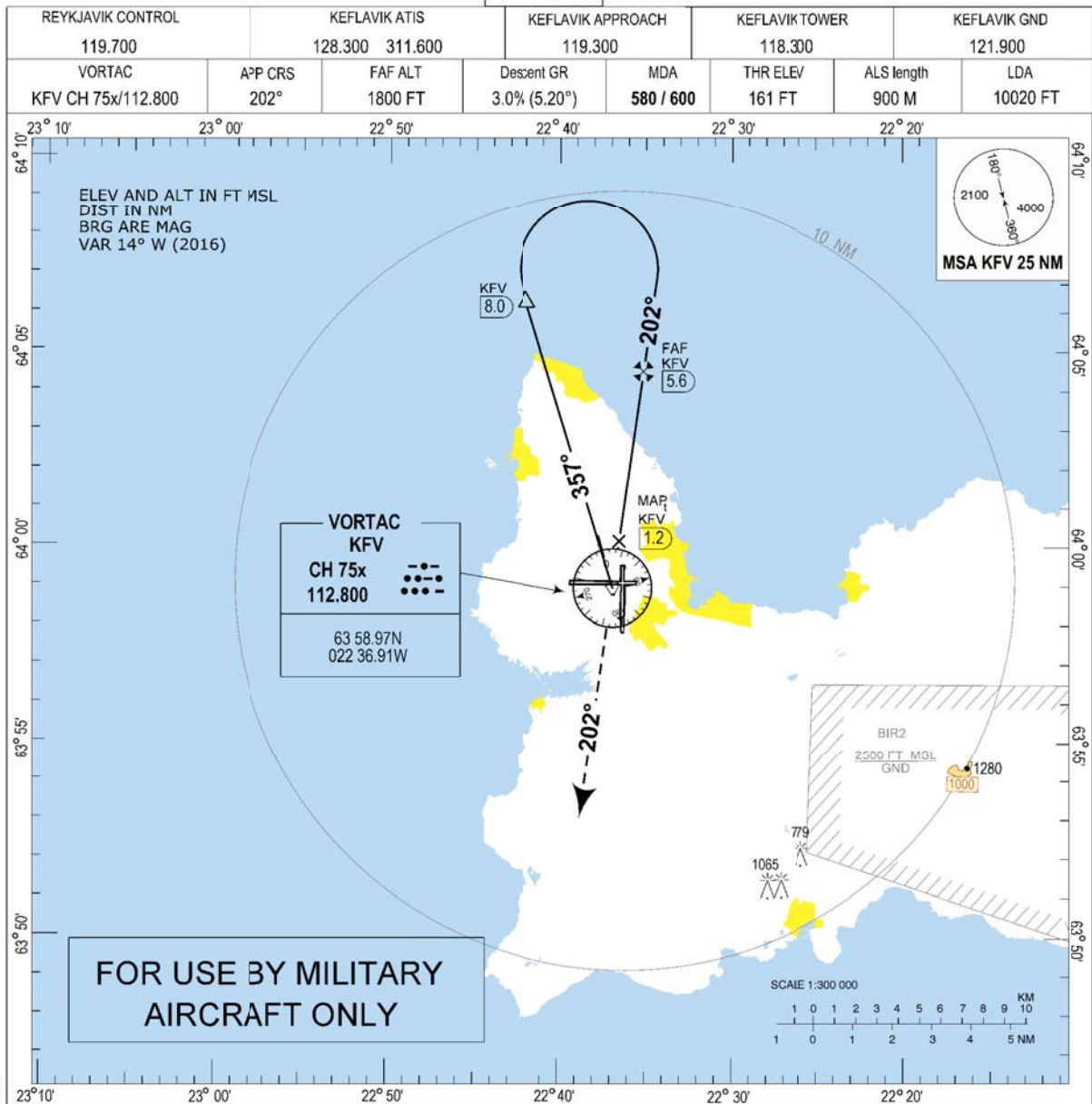


Keflavik MILITARY VORTAC RWY 19 (CAT C-D)

MIPS
INSTRUMENT APPROACH CHART

VORTAC RWY 19 (CAT C-D)
KEFLAVIK (BIKF)



CHANGES: DIST AT FAF ON PROFILE

MISSED APPROACH:

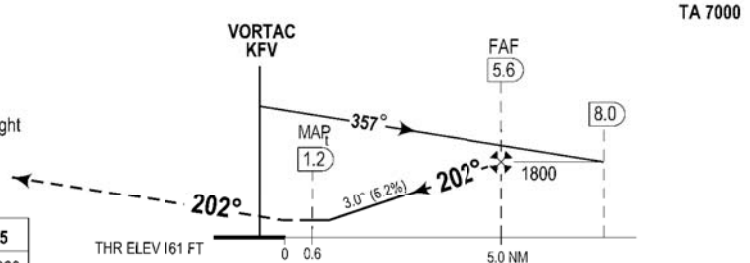
Climb direct KfV VOR continue on R 202 to 3000.
Expect vectoring by KEFLAVIK APP.

RCF:

Continue on course 202°, passing KfV 20 DME turn right direct KfV at 3000 for new approach.

DIST TO KfV	2	3	4	5
ALTITUDE	670	985	1305	1620

Timing not authorized for defining MAP



	CATEGORY	C	D
MIPS	VORTAC 19	580 -1.2 419 (500-1.2/1.9)	600 -1.3 439 (500-1.3/2.0)
	CIRCLING	870 -3.3 701 (800-3.3)	940 -3.6 771 (800-3.6)

VORTAC RWY 19 (CAT C-D)

KEFLAVIK (BIKF)

THIS PAGE INTENTIONALLY LEFT BLANK