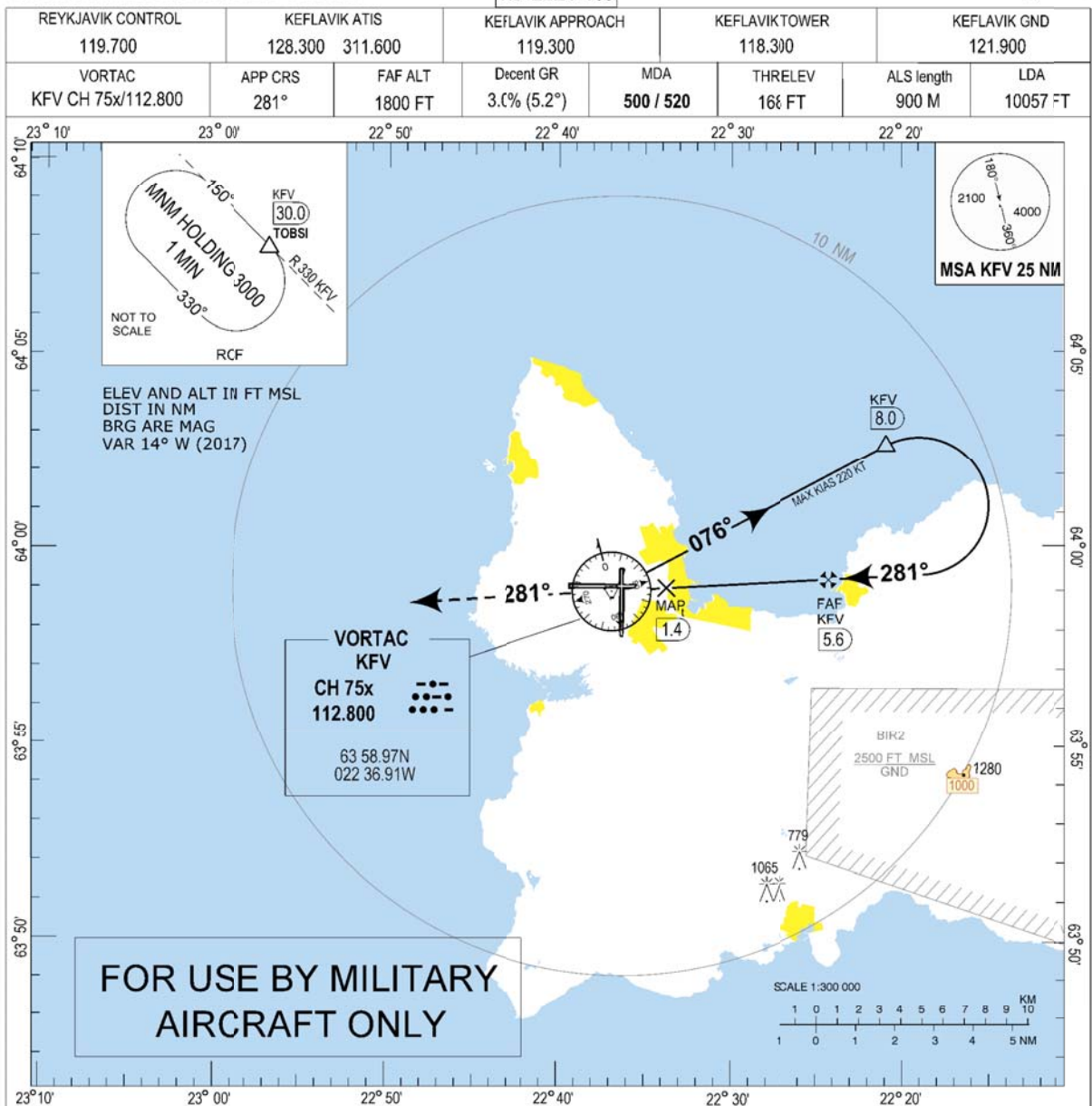


Keflavik MILITARY VORTAC RWY 28 (CAT C-D)

MIPS
INSTRUMENT APPROACH CHART

VORTAC RWY 28 (CAT C-D)
KEFLAVIK (BIKF)



MISSED APPROACH:

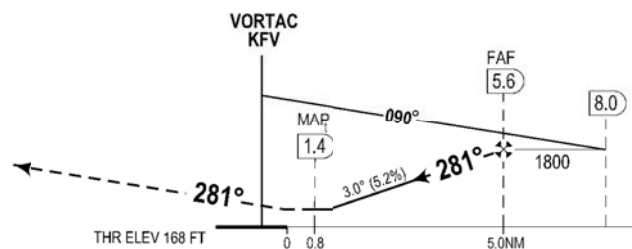
Climb on course 281° to 3000.
Expect vectoring by KEFLAVIK APP.

RCF:

At KfV 10 DME turn right on heading 010°, intercept KfV radial 330 and hold at TO3SI at 3000

DIST TO KfV	2	3	4	5
ALTITUDE	670	985	1305	1620

Timing not authorized for defining MAP



CHANGES: ALS, VIS

MIPS	CATEGORY	C		D	
	VORTAC 28	500	-0.8 332 (400-0.8/1.5)	520	-0.9 352 (400-0.9/1.6)
CIRCLING	870	-3.3 701 (800-3.3)	940	-3.6 771 (800-3.6)	

VORTAC RWY 28 (CAT C-D)

KEFLAVIK (BIKF)

THIS PAGE INTENTIONALLY LEFT BLANK