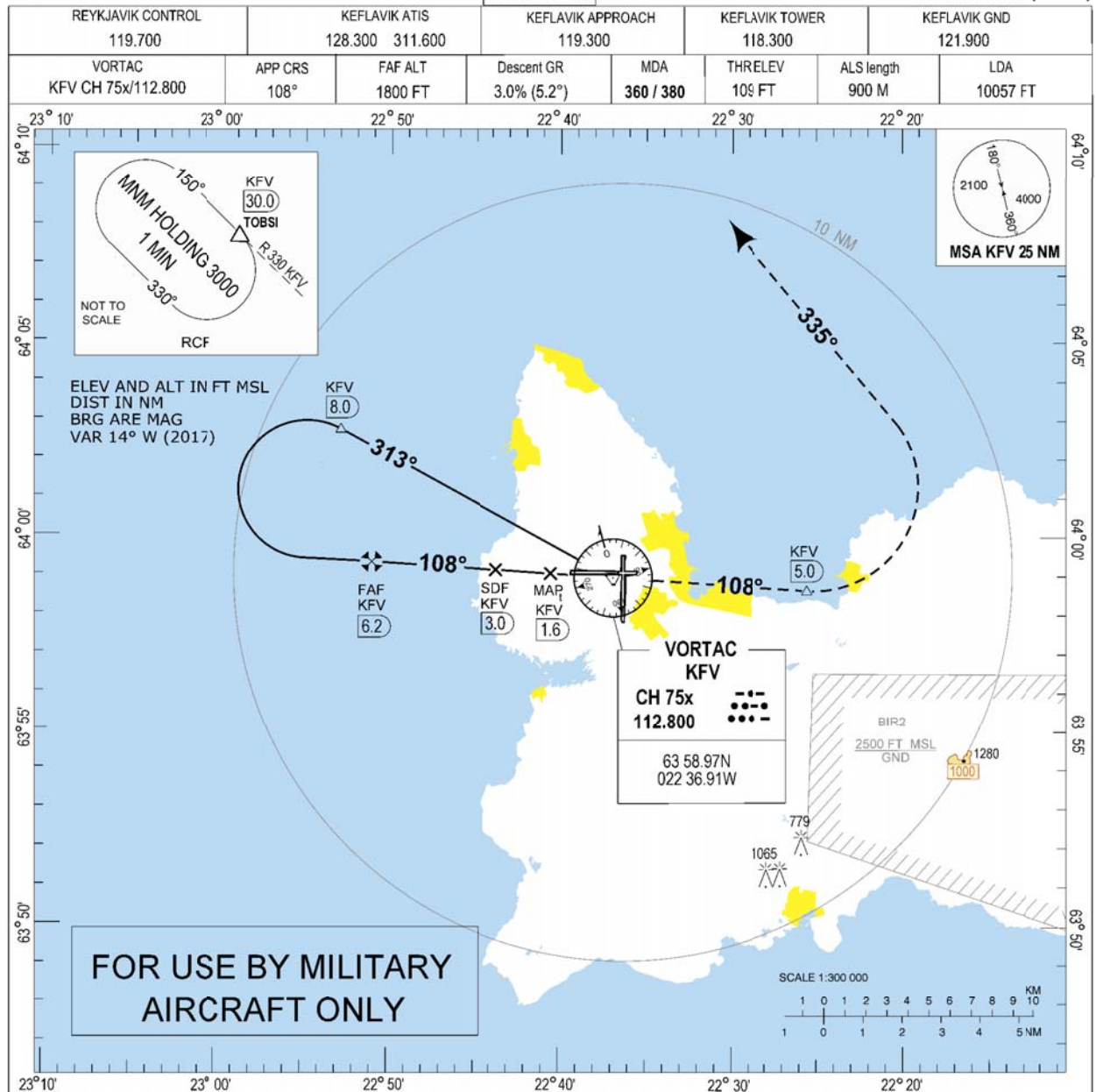


Keflavik MILITARY VORTAC RWY 10 (CAT C-D)

MIPS
INSTRUMENT APPROACH CHART

VORTAC RWY 10 (CAT C-D)
KEFLAVIK (BIKF)

AD ELEV 169



MISSED APPROACH:

Climb on Radial 108° to KVF 5 DME, turn left on heading 335° climbing to 3000. Expect vectoring by KEFLAVIK APP.

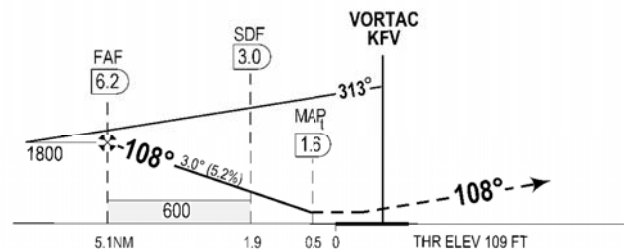
TA7000

RCF:

At KVF 10 DME turn left on heading 290° intercept radial 330 and hold TOBSI at 3000.

DIST TO KVF	6	5	4	3	2
ALTITUDE	1730	1415	1095	780	460

Timing not authorized for defining MAP



CHANGES: NEW CHART

MIPS	CATEGORY	C		D	
	VORTAC 10	360	-0.8 251 (300-0.8/1.3)	380	-0.8 271 (300-0.8/1.3)
CIRCLING	870	-3.3 701 (800-3.3)	940	-3.6 771 (800-3.6)	

VORTAC RWY 10 (CAT C-D)

KEFLAVIK (BIKF)

THIS PAGE INTENTIONALLY LEFT BLANK