

Keflavik RNAV SID RWY 01 - DELES 1A, RALOV 2A, SORIR 2A

STANDARD DEPARTURE CHART -
INSTRUMENT (SID) - ICAO

SCALE 1:750.000

AD ELEV 169

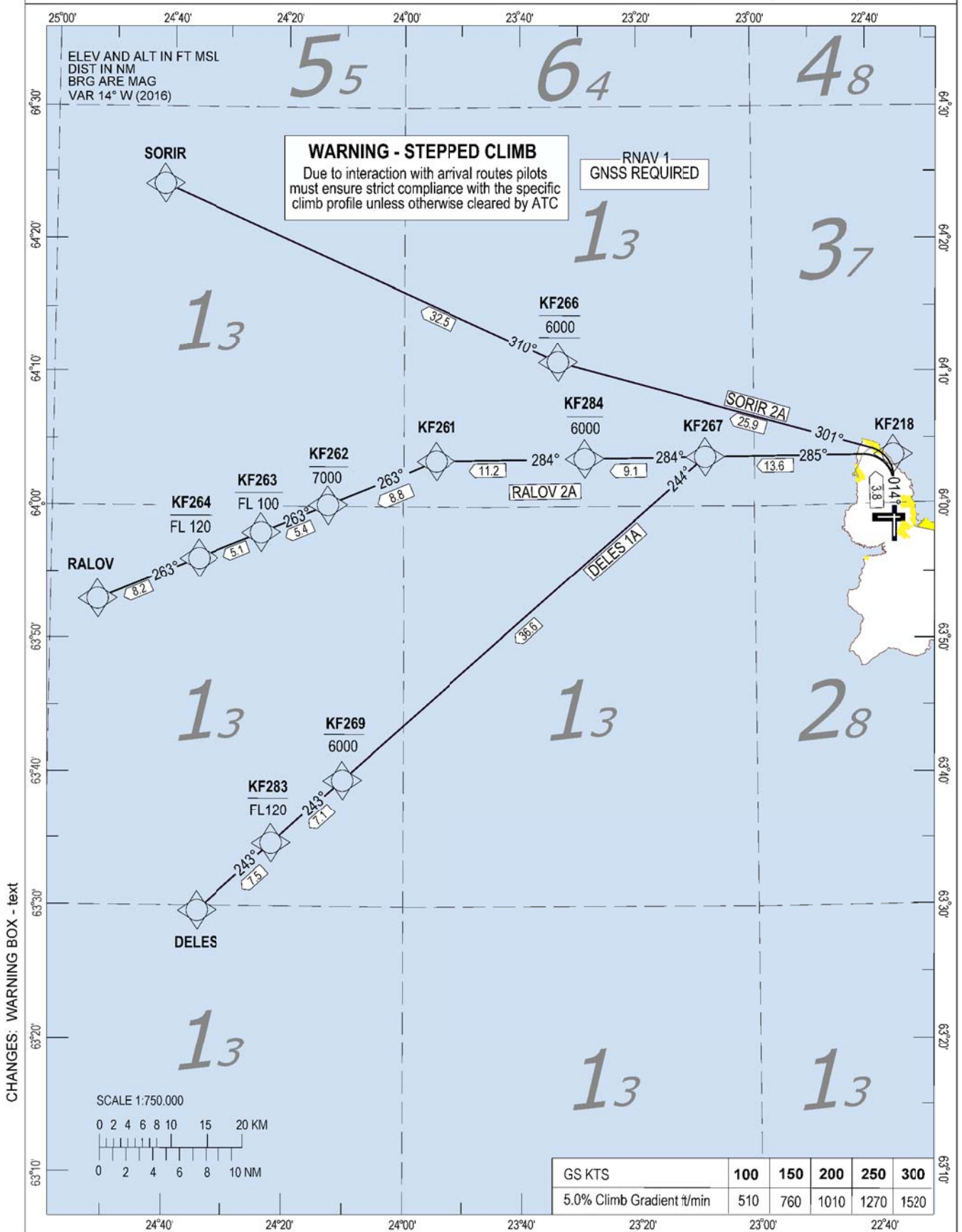
TRANSITION
ALTITUDE 7000

ATIS	128.300
APP	119.300
TWR	118.300
ACC	119.700

BIKF - KEFLAVIK

RNAV SID RWY 01

DELES 1A, RALOV 2A, SORIR 2A



CHANGES: WARNING BOX - text

STANDARD DEPARTURE ROUTES - INSTRUMENT (SID) - ICAO (RNAV 1 SID BASED ON GNSS)			BIKF - KEFLAVIK RNAV SID RWY 01 DELES 1A, RALOV 2A, SORIR 2A	
<p>GENERAL: Vectoring may be used when necessary. Loss of RNAV 1 capability - Advise ATC. Maximum speed below FL100: 250 kt IAS unless otherwise instructed by ATC. instructed by ATC. Expect first CPDLC Data Link Authority to be BIRD.</p> <p>RADIO COMMUNICATION FAILURE: Set transponder to A 7600. Proceed in accordance with the departure clearance routing and restrictions then in accordance with oceanic/enroute clearance, including level and speed, to the last specified cleared route point, normally landfall, then continue on the filed flight plan route. If under vectoring proceed in the most direct manner to join the cleared route and proceed in accordance with the ATC clearance.</p> <p>ATC CLEARANCE: Departing IFR flights shall obtain ATC clearance from "Keflavik Delivery" 121.000 MHz.</p> <p>NON RNAV 1 ACFT: At first contact with "Keflavik Delivery" state "UNABLE RNAV 1", OMNI-DIRECTIONAL DEPARTURE available (see BIKF AD2.24).</p> <p>NOTE: Segment distance to KF218 and from KF218 to KF266/KF284 are based on average flight path criteria.</p> <p>NOISE ABATEMENT: NADP-2</p>				
DESIGNATOR	ROUTE	RESTRICTIONS	After Take-off	
			Climb to	Contact
DELES 1A (DELES ONE ALPHA DEPARTURE)	To KF218 on course 014°, left turn to KF267, left turn to KF269, to KF283, to DELES	WARNING - STEPPED CLIMB. A MNM climb gradient of 5.0% i.e. 304 FT/NM is required until 2000 FT. Cross KF269 at 6000 or below, cross KF283 at FL120 or below.	Follow SID altitude restrictions to level cleared by ATC.	Contact KEFLAVIK APP 119.300
RALOV 2A (RALOV TWO ALPHA DEPARTURE)	To KF218 on course 014°, left turn to KF267, to KF284, to KF261, left turn to KF262, to KF263, to KF264, to RALOV	WARNING - STEPPED CLIMB. A MNM climb gradient of 5.0% i.e. 304 FT/NM is required until 2000 FT. Cross KF284 at 6000 or below, cross KF262 at 7000 or below, cross KF263 at FL100 or below, cross KF264 at FL120 or below.	Follow SID altitude restrictions to level cleared by ATC.	Contact KEFLAVIK APP 119.300
SORIR 2A (SORIR TWO ALPHA DEPARTURE)	To KF218 on course 014°, left turn to KF266, to SORIR	WARNING - STEPPED CLIMB. A MNM climb gradient of 5.0% I.E. 304 FT/NM is required until 2000 FT. Cross KF266 at 6000.	Follow SID altitude restrictions to level cleared by ATC.	Contact KEFLAVIK APP 119.300
CHANGES: Editorial.				