

Keflavik RNAV STAR RWY 19 - DEVUD 2K, NASBU 2K, ASRUN 2K, BASLU 2K

STANDARD ARRIVAL CHART -  
INSTRUMENT (STAR) - ICAO  
CONTINUOUS DESCENT ARRIVALS

SCALE 1:750.000

TRANSITION  
ALTITUDE 7000

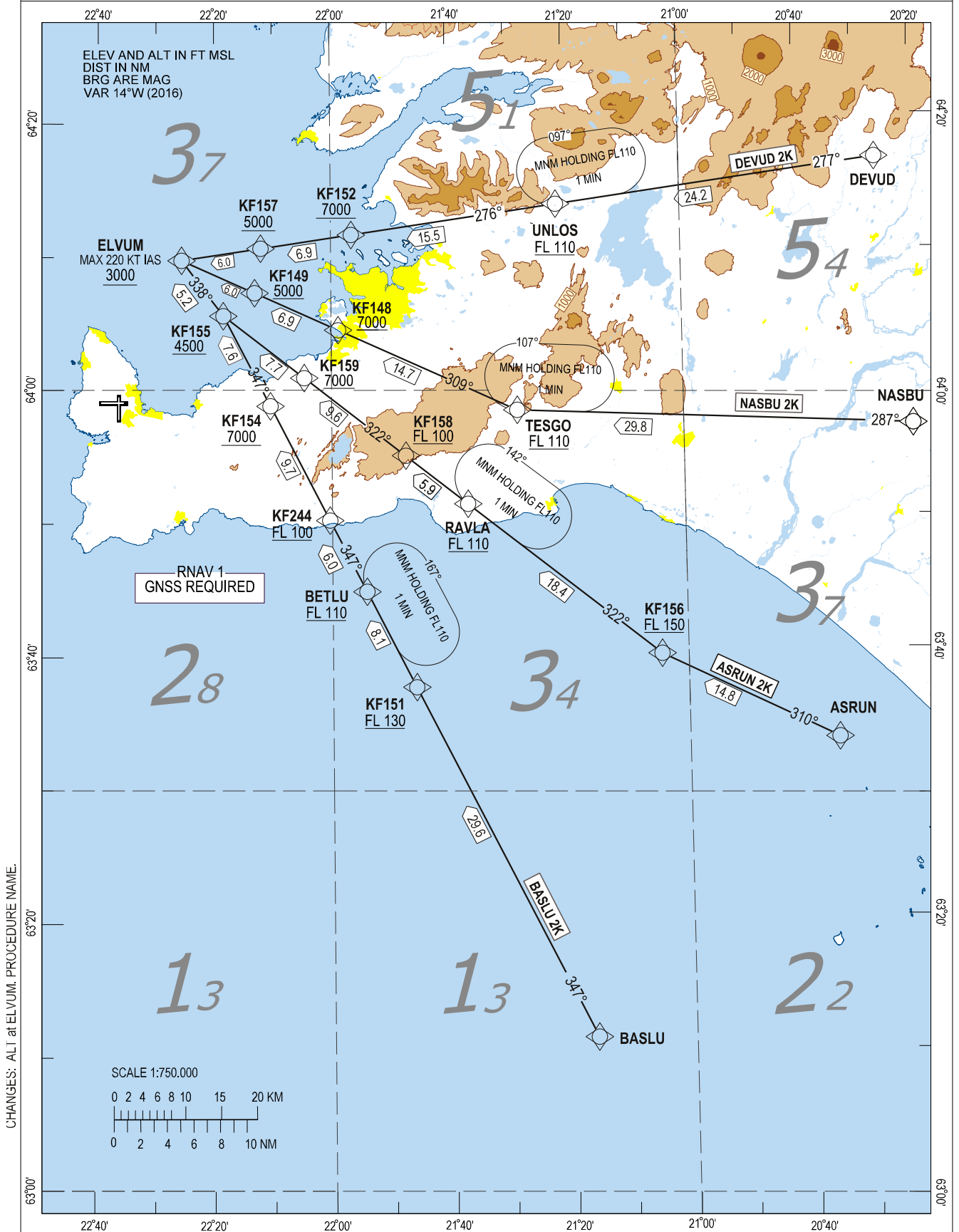
ATIS	128.300
APP	119.300
TWR	118.300
ACC	119.700

BIKF - KEFLAVIK

RNAV STAR RWY 19

AD ELEV 169

DEVUD 2K, NASBU 2K, ASRUN 2K, BASLU 2K



STANDARD ARRIVAL ROUTES - INSTRUMENT (STAR) - ICAO CONTINUOUS DESCENT ARRIVALS (RNAV1 STAR BASED ON GNSS)		BIKF - KEFLAVIK RNAV STAR RWY 19 DEVUD 2K, NASBU 2K, ASRUN 2K, BASLU 2K		
<b>GENERAL:</b>	RNAV1(GNSS) approval required. Vectoring may be used when necessary. Loss of RNAV1 capability - Advise ATC. Maximum speed below FL100: 250 kt IAS unless otherwise stated under RESTRICTIONS or instructed by ATC.			
<b>RADIO COMMUNICATION FAILURE:</b>	Set transponder to A 7600. Follow cleared or expected STAR until IAF, then start approach to assigned runway without delay.			
<b>NON RNAV 1 ACFT:</b>	State "UNABLE RNAV 1", expect radar vectoring.			
<b>NOTE:</b>	At first contact with KEFLAVIK APPROACH state callsign and ATIS received only. Change to Keflavik QNH at Transition Level or when passing last Flight Level restriction if higher.			
DESIGNATOR	ROUTE	RESTRICTIONS	DESCEND	CLEARANCE LIMIT
<b>DEVUD 2K</b> (DEVUD TWO KILO ARRIVAL)	From DEVUD to UNLOS to KF152 to KF157 to ELVUM	Cross UNLOS at or above FL110, cross KF152 at or above 7000, cross KF157 at or above 5000, cross ELVUM at or above 3000, speed 220 KT IAS or less at ELVUM	As cleared by ATC	ELVUM
<b>NASBU 2K</b> (NASBU TWO KILO ARRIVAL)	From NASBU to TESCO to KF148 to KF149 to ELVUM	Cross TESCO at or above FL110, cross KF148 at or above 7000, cross KF149 at or above 5000, cross ELVUM at or above 3000, speed 220 KT IAS or less at ELVUM	As cleared by ATC	ELVUM
<b>ASRUN 2K</b> (ASRUN TWO KILO ARRIVAL)	From ASRUN to KF156 to RAVLA to KF158 to KF159 to KF155 to ELVUM	Cross KF156 at or above FL150, cross RAVLA at or above FL110, cross KF158 at or above FL100, cross KF159 at or above 7000, cross KF155 at or above 4500, cross ELVUM at or above 3000, speed 220 KT IAS or less at ELVUM	As cleared by ATC	ELVUM
<b>BASLU 2K</b> (BASLU TWO KILO ARRIVAL)	From BASLU to KF151 to BETLU to KF244 to KF154 to KF155 to ELVUM	Cross KF151 at or above FL130, cross BETLU at or above FL110, cross KF244 at or above FL100, cross KF154 at or above 7000, cross KF155 at or above 4500, cross ELVUM at or above 3000, speed 220 KT IAS or less at ELVUM	As cleared by ATC	ELVUM