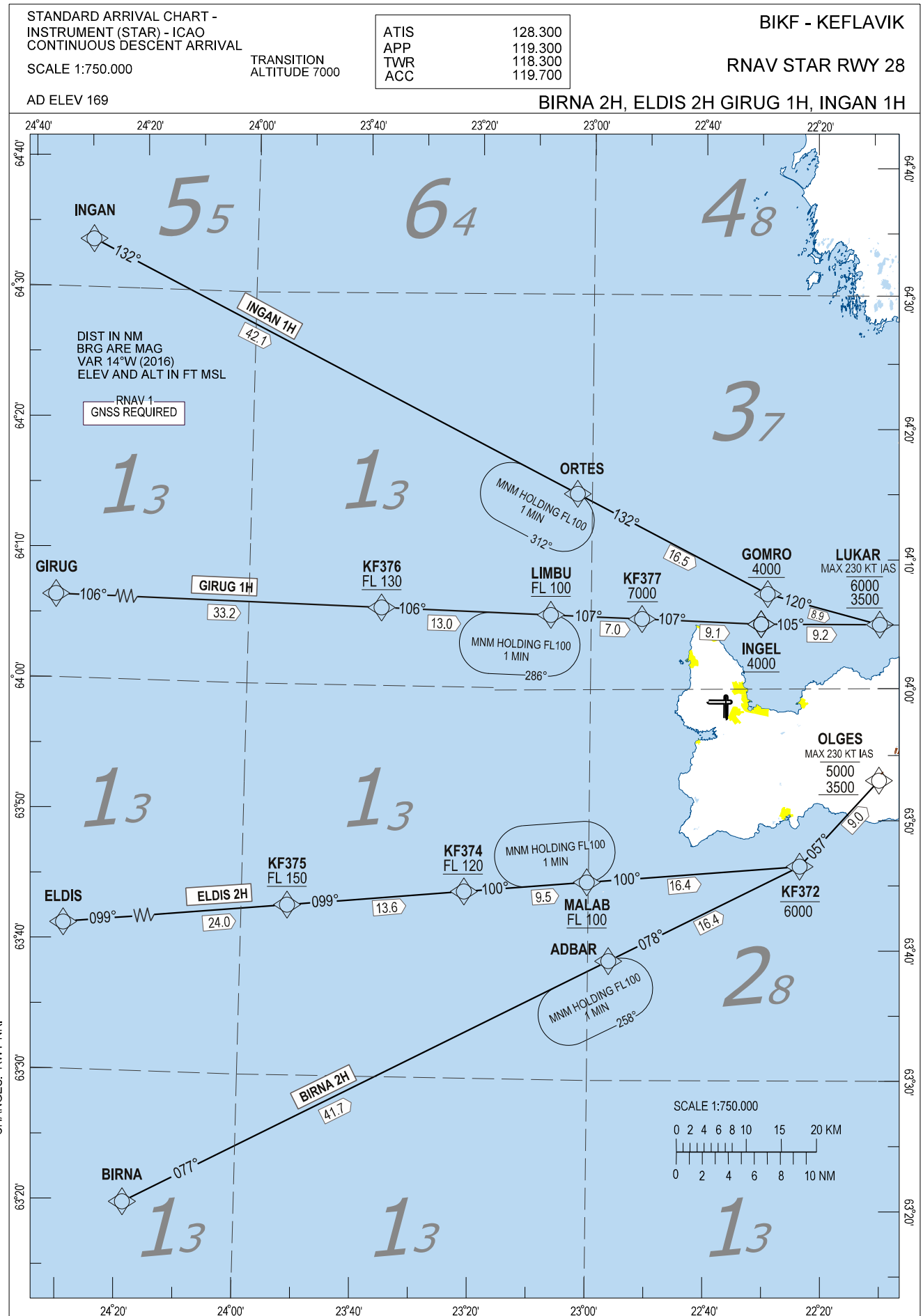


Keflavik RNAV STAR RWY 28 - BIRNA 2H, ELDIS 2H, GIRUG 1H, INGAN 1H



STANDARD ARRIVAL ROUTES -
INSTRUMENT (STAR) - ICAO
CONTINUOUS DESCENT ARRIVALS
(RNAV1 GNSS REQUIRED)

BIKF - KEFLAVIK
RNAV STAR RWY 28

BIRNA 2H, ELDIS 2H GIRUG 1H, INGAN 1H

GENERAL: RNAV1(GNSS) approval required.
Vectoring may be used when necessary.
Loss of RNAV1 capability - Advise ATC.
Maximum speed below FL100: 250 kt IAS unless otherwise stated under RESTRICTIONS or instructed by ATC.

RADIO COMMUNICATION FAILURE: Set transponder to A 7600.
Follow cleared or expected STAR until IAF, then start approach to assigned runway without delay.

NON RNAV 1 ACFT: State "UNABLE RNAV 1", expect radar vectoring.

NOTE: At first contact with KEFLAVIK APPROACH state callsign and ATIS received only.
Change to Keflavik QNH at Transition Level or when passing last Flight Level restriction if higher.

DESIGNATOR	ROUTE	RESTRICTIONS	DESCEND	CLEARANCE LIMIT
BIRNA 2H (BIRNA TWO HOTEL ARRIVAL)	From BIRNA to ADBAR to KF372 to to OLGES	Cross KF372 at or below 6000, cross OLGES between 5000 and 3500, speed 230 KT IAS or less at OLGES	As cleared by ATC	OLGES
ELDIS 2H (ELDIS TWO HOTEL ARRIVAL)	From ELDIS to KF375 to KF374 to MALAB to KF372 to OLGES	Cross KF375 at or above FL150, cross KF374 at or above FL120, cross MALAB at or above FL100, cross KF372 at or below 6000, cross OLGES between 5000 and 3500, speed 230 KT IAS or less at OLGES.	As cleared by ATC	OLGES
GIRUG 1H (GIRUG ONE HOTEL ARRIVAL)	From GIRUG to KF376 to LIMBU to KF377 to INGEL to LUKAR	Cross KF376 at or above FL130, cross LIMBU at or above FL100, cross KF377 at or above 7000 FT, cross INGEL at or above 4000, cross LUKAR between 6000 and 3500, speed 230 KT IAS or less at LUKAR.	As cleared by ATC	LUKAR
INGAN 1H (INGAN ONE HOTEL ARRIVAL)	From INGAN to ORTES to GOMRO to LUKAR	Cross GOMRO at or above 4000, cross LUKAR between 6000 and 3500, speed 230 KT IAS or less at LUKAR	As cleared by ATC	LUKAR