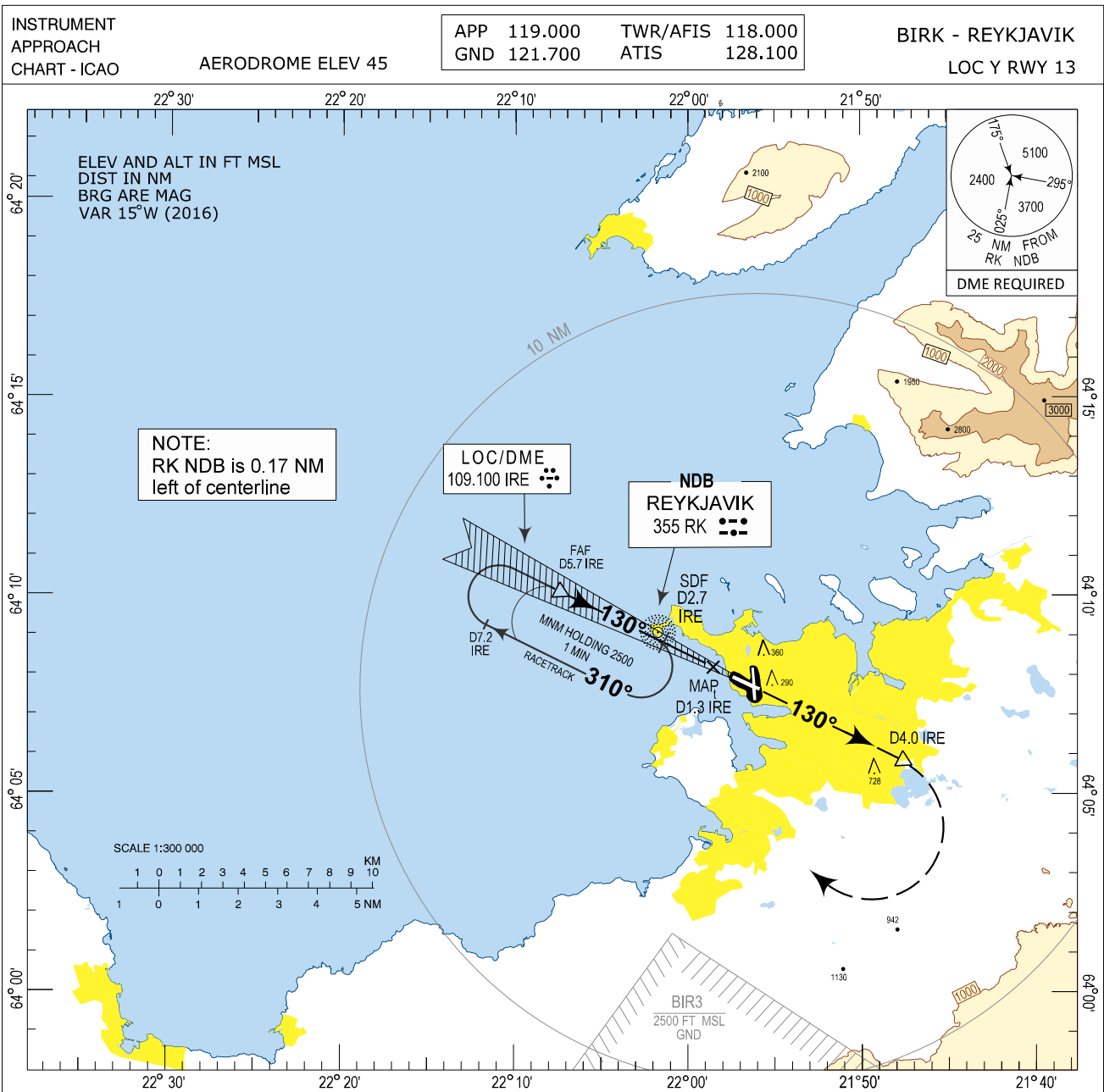
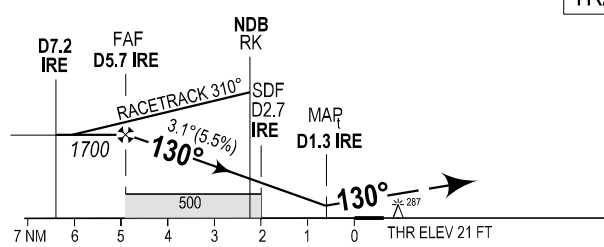


Reykjavik LOC Y RWY 13 Instrument Approach Chart - ICAO



CHANGES: NES L REMOVED.

MISSED APPROACH:
Climb on track 130° to D4.0 IRE, turn right direct RK NDB climbing to 2500 FT. Expect vectoring by Reykjavik APP.
RCF: Continue direct RK NDB for new approach.



TRANSITION ALT 7000

OCA (H)	A	B	Remarks
LOC-DME	2.5%* 290 (269)	310 (289)	*MNM MISSED APCH CLIMB GRADIENT
LOC-DME	4.0%* 270 (249)	270 (249)	
CIRCLING	660 (615)	660 (615)	

DME IRE	2	3	4	5
ALTITUDE	480	810	1140	1470

Timing not authorized for defining MAP

GS	kt	75	100	120	140	160	180
FAF - D1.3 IRE (4.4NM)	MIN:SEC	3:31	2:38	2:12	1:53	1:39	1:28
Rate of descent (5.5%)	ft/MIN	410	550	660	770	880	990

THIS PAGE INTENTIONALLY LEFT BLANK